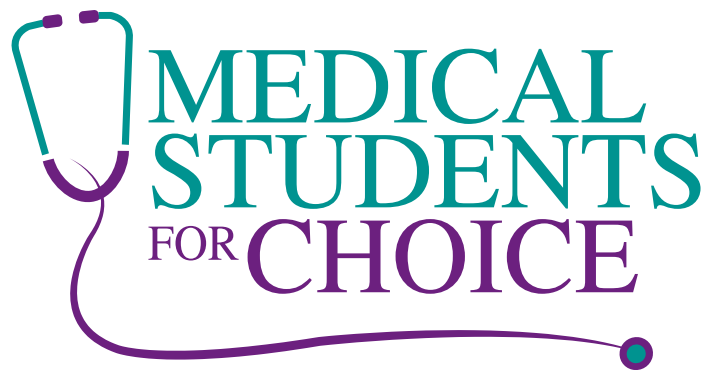
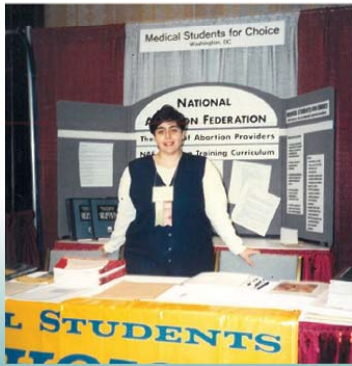


20 YEARS OF CREATING PROVIDERS



ANNUAL REPORT
2012

MEDICAL STUDENTS FOR CHOICE began its work amid a wave of violence against physicians who provided abortion care. Between 1993 and 1995, two physicians and three clinic workers were murdered and seven others were wounded. For MSFC's early medical student activists, the violence targeting medical providers raised their awareness of the silence in their medical schools' curricula on the topic of abortion. The dramatic drop in the number of physicians willing to provide this essential care for women increased the sense of urgency and the need to take action.

FOR 20 YEARS, MSFC HAS FOCUSED on creating abortion providers by developing a supportive community for interested medical students, nurturing the growth of students' commitment to provision, and working to make experience with abortion a standard part of medical education and training. Our vision focuses on developing medical students not only as effective leaders on campus, but also as effective leaders in the reproductive justice movement, ensuring that our organizational values of justice, non-judgment, and effective patient access are values each leader takes forward into medical practice. MSFC believes that a key element to ensuring that women have what they need to manage their reproductive lives is a physician who is educated in all aspects of family planning and willing to provide pregnancy termination services when chosen. Our mission focuses on creating those physicians.

PHYSICIANS HAVE POWER, STATUS, AND PRESTIGE in nearly every culture around the world and MSFC seeks to leverage that power in ways that promote our vision of reproductive health, justice, and rights around the world. We do this by engaging medical student activists in mission-related work that challenges them as individuals and groups to a) overcome resistance from those in power positions in their institutions, b) learn to use their voices in effective, strategic ways in the broader community, and c) develop the ability to carry forward a change strategy beyond any single individual's participation. Learning the value of empowering the group, sustaining a strategy for multiple years, and using key stakeholder voices strategically are life lessons our activists take with them beyond their work with MSFC.

UPDATE FROM THE PRESIDENT



MEDICAL STUDENTS FOR CHOICE reached amazing new milestones in 2012! As our chapters in the US and Canada continued to thrive, MSFC's work expanded to 14 additional countries around the world and MSFC's active medical student leadership focused on strategic ways to move our mission forward in many new political environments. From Ireland where abortion is largely illegal and unavailable to Bulgaria where abortion is available but contraceptive options are limited, MSFC's medical student activists are pushing for the education they need to provide comprehensive care for women.

MSFC also expanded its Reproductive Health Externship program overseas in 2012. The British Pregnancy Advisory Service (bpas), the largest provider of abortions in the UK, opened its doors to medical students interested in learning about abortion care. Students from Ireland and other parts of the world gained first-hand experience with abortion at bpas clinics in London. The program was so successful that MSFC and bpas agreed to dramatically increase the numbers of externs accommodated in bpas clinics in 2013.

Here in the US, we continued to face legislative challenges that hindered our members' access to abortion training. We engaged with our partners at the ACLU and the Center for Reproductive Rights in efforts to prevent the passage of harmful legislation, but were too often unsuccessful. In 2012, we began funding new opportunities for our members who have been denied training so that they could seek training in other states.

MSFC exists because abortion training continues to be inaccessible for most medical students in the US and more difficult to obtain in Canada. As MSFC expands across the globe, our mission to create tomorrow's abortion providers is becoming even more urgent and relevant. The generous support of our wonderful community of donors has enabled us to keep abortion training an option for many students in the US and Canada and has sustained us as medical students around the world reach out for help. Thank you!

With best wishes,

A handwritten signature in purple ink, appearing to read 'Emily Ketterer'.

EMILY KETTERER, MD, President 2011-2013
Wayne State University School of Medicine, 2013
University of Pittsburgh Medical Center

STUDENT ORGANIZING HIGHLIGHTS

AT MSFC, SUPPORTING OUR STUDENT-LED CHAPTERS in transforming their reproductive health education is at the core of what we do each day. Our community organizing model allows us to be effective in an environment that is often resistant to outside intervention. By nurturing and developing student leadership at the local levels and allowing chapters to choose the most appropriate organizing strategies for each local community, we are able to sustain a strong vision of change over time. These principles allow us to continually grow our presence in increasingly diverse environments.

The Grassroots

In the past year, our program team worked closely with 159 chapters located all over the world to provide organizing expertise, technical assistance and direct funding to our students. Our student leaders are constantly looking for new ways to engage their classmates in discussions and activities that are both relevant to their campus environment and will work to create a rich community of providers for future generations of women. Here are just a few examples of events hosted by MSFC chapters in 2012:

- The University of British Columbia hosted a Reproductive Health lunch series over two weeks covering topics such as the prevention of unsafe abortion, the ethics and law surrounding abortion in Canada, and perspectives on later abortions.
- The University of Florida held a discussion open to the entire campus community on the role of a provider in instances of sexual coercion and birth control sabotage.
- The University of Southern California-Keck School of Medicine hosted a well-attended provider panel featuring Planned Parenthood Fellows and providers from local clinics. The overarching topic of the panel was the question “Why am I a Provider?”

These types of events, in conjunction with more formalized curriculum change efforts, create a space within the medical community for essential discussions about the importance of family planning and abortion for women, and what it means for each individual medical student and resident to make a commitment to provide comprehensive reproductive healthcare, including abortion, to their future patients.

With more than 1,000 educational events planned by our students each year, MSFC is fundamentally changing the landscape of medical education.



In late 2012, the six MSFC chapters in Ireland came together to

host a small conference on reproductive health attended by 81 students. This was the first time our students throughout Ireland were able to come together and focus intensively on the reproductive health issues currently facing the country and the impact Ireland's restrictive laws have on their medical education. While the challenges facing these passionate student activists are unique among the MSFC chapter landscape (as abortion is currently illegal in Ireland), it was a powerful starting point for understanding the impact that Medical Students for Choice can have for students who may not perform elective abortions in their future practices, but most certainly will have to cope with the effects of unsafe abortions.





"It is my sincere hope that by the time I am done with my training, there will be far fewer abortions to be done because my colleagues and I will be fighting hard to make sure every woman and man has access to affordable, effective contraception... But I know no matter what, there will always be a need for compassionate, competent providers." — 4th year medical student

Reproductive Health Externship Funding Program

MSFC IS COMMITTED TO FUNDING direct training opportunities for medical students and residents who must go outside of their institution for abortion training through our Reproductive Health Externship Funding Program (RHE). In 2012, 77 externs completed the program and according to survey data collected at the completion of each participants' externship, 87% reported they are likely to provide abortion services in their future practice. Building medical students' and residents' intention to provide is just one of the many meaningful ways in which Medical Students for Choice is addressing the clear need for compassionate, fully-trained abortion providers.



*"This externship was the most eye opening and beneficial experience I have had thus far in my training. Every day presented itself with a new challenge and learning opportunity...it fueled my desire to be a provider in the future."
— 3rd year medical student*

MEDICAL STUDENTS FOR CHOICE THANKS ALL OF OUR PARTNERING CLINICS AND THEIR STAFF — WITHOUT THE SUPPORT OF THIS WONDERFUL COMMUNITY OF INDIVIDUALS OUR MEDICAL STUDENTS AND RESIDENTS WOULD NOT GET THE TRAINING AND MENTORSHIP THAT MAKES SUCH A DIFFERENCE ON THEIR PATH TO PROVISION.

Annual Meeting

MSFC'S 2012 ANNUAL MEETING: THE CONFERENCE ON FAMILY PLANNING was held November 10-11 in St. Louis, MO. The Conference on Family Planning provides medical students with a focused opportunity to network with mentors, learn from experts in reproductive health and abortion advocacy, and gain from lectures and skill-building educational sessions designed to fill the gaps in medical education around women's reproductive health care. Over 300 students registered for the conference, representing 76 medical schools from across the United States, Canada, Israel and Ireland. One student traveled all the way from Kigali, Rwanda to join us at the conference! Perhaps most meaningfully, of the thirty-four faculty who led sessions at the conference, thirteen identified themselves as MSFC alumni.

A highlight for many that weekend was the presentation of two Warrior Healer Awards presented by women's rights activist, Merle Hoffman, honoring the extraordinary commitment to women's lives and freedom shown by two outstanding MSFCers.



Resident Support

MSFC's residency level support continues to include facilitating mentorship opportunities for residents who want to further their involvement at the grassroots level with the chapters in their area, encouraging resident participation in the Conference on Family Planning, and funding direct abortion training through the Reproductive Health Externship Funding Program. Additionally, MSFC encourages interested residents to be active in bringing family planning education to their peers, in the same way medical students supplement the curricula on their campuses, through presentations at Grand Rounds.

"In discussing women's health care, I can think of no battle in greater need of my sword...I enthusiastically embrace my position as a soldier in the battle of women's rights...I can serve as a

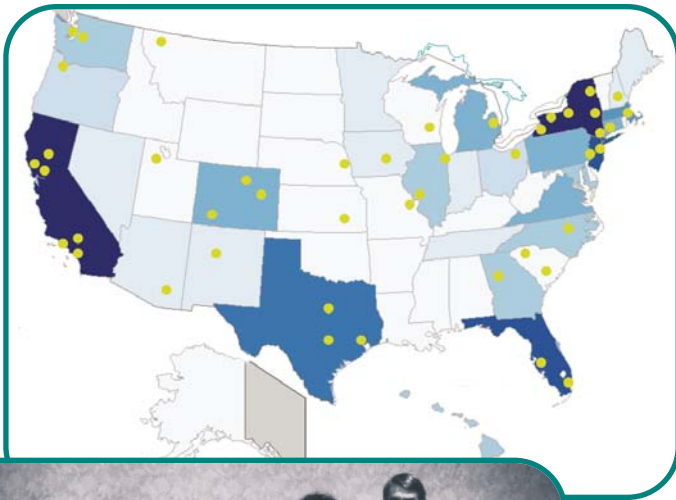


2012 Award of Warrior Healer

for

Extraordinary Commitment to Women's Lives & Women's Freedom

model, resource, and a support system for my patients, the everyday champions often involuntarily enlisted in the war over reproductive rights." — 2012 Warrior Healer Award Recipient



MSFC ALUMNI COMMUNITY

As MSFC completes its first 20 years, our network of support has grown to include an ever expanding number of alumni physicians who are now providing leadership in abortion care across the globe. Today, as a result of our work, the largest proportion of the physicians providing abortions in the US is under the age of 40. MSFC alumni physicians have become a substantial presence in Planned Parenthood's National Medical Committee and the Medical Director's Council. Planned Parenthood affiliates in New York, California, Iowa & Nebraska, Texas, Florida, and the Carolinas have MSFC alumni medical leadership. MSFC alumni are associate professors at universities throughout the US and Canada and are working at the CDC and the World Health Organization. We are leveraging these relationships to enhance support for current student activists as well as to promote the need for focused efforts to encourage abortion provision among physicians practicing women's health care.

We are tremendously grateful for the support of our thousands of activists, donors and allies who support MSFC through generous financial contributions. Your support helps make choice a reality!

FINANCIAL STATEMENT 2012

INCOME

Individual & Trust Contributions	240,597
Foundation Grants	257,904
Meeting Registrations	37,766
Miscellaneous Income	26,548
Investment Income	29,279
Net gains (losses) on investments	51,050
Foundation Grants released for use in 2012	578,311

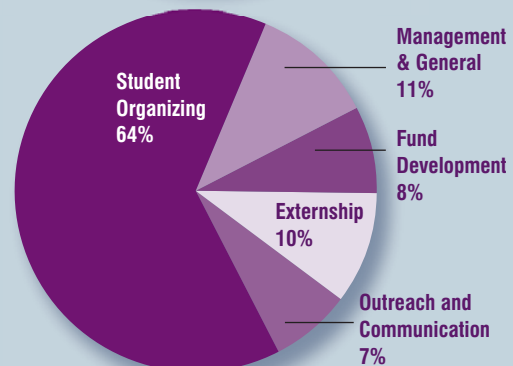
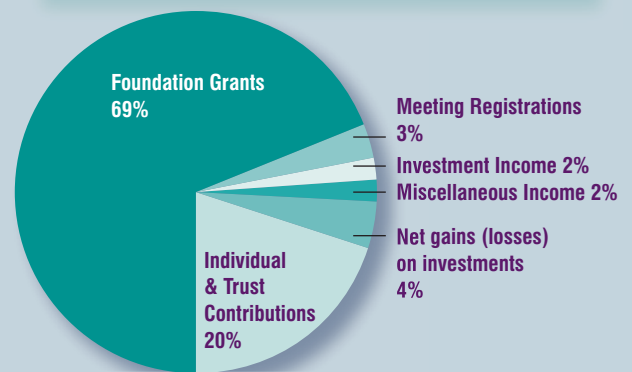
Total Revenues and Support 1,221,455

EXPENSES

Externship	109,202
Outreach & Communication	69,754
Student Organizing	673,904
Fund Development	78,729
Management & General	116,258

Total Expenses 1,047,847

Net Assets at Beginning of Year	3,121,353
Net Assets at End of Year	2,716,650



20 YEARS OF CREATING PROVIDERS



2012 Funder List

Vladimir and Araxia Buckhantz
Wallace Alexander Gerbode
Alki Fund of the Rockefeller Family Foundation
Scherman Foundation
Roth Family Foundation
William and Flora Hewlett Foundation
1661 Foundation
Lisa and Douglas Goldman Fund
CREDO/Working Assets
Ettinger Foundation
Libra Foundation

2012 Board of Directors

Emily Ketterer, President

Wayne State University School of Medicine

Sarp Aksel, President-Elect

Albert Einstein College of Medicine

Miquia Henderson, Treasurer

Washington University in St. Louis

Emily Young, Secretary

NOVA Southeastern

Rachel Simpson

University of Arizona, Phoenix

Melissa Figueroa

Albert Einstein College of Medicine

Johana Oviedo

Stanford University

David Turok, MD, MPH

University of Utah Department of Obstetrics
& Gynecology

Heidi Printz, PhD

Planned Parenthood Mar Monte

Jane Napoli, SPHR

Planned Parenthood Southeastern Pennsylvania

Lydia Fein

University of Miami School of Medicine

Carolyn Payne

University of Toledo College of Medicine

Sarah White

Northern Ontario School of Medicine

Robert Obara

Trinity College, Dublin

Alecia Fields

Edward Via College of Osteopathic Medicine

Caitlin Goss

University of New Mexico School of Medicine

Kaebah Orme-Evans

Oregon Health & Science University

Nicole Fanarjian, MD, MSCR, FACOG

Planned Parenthood of Southwest and Central Florida

Rebecca Foley

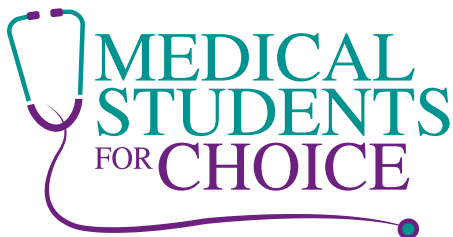
Women's Way Philadelphia

Julie French, MPA

Department of Ob/Gyn and Reproductive Sciences,
University of California San Francisco

“It is important that I provide abortions because if not me, then who? ... This is simply too important a cause to be relegated to the responsibility of others... I am committed to protecting and providing a women's right to choose.”

— 2012 Warrior Healer Award Recipient



p. o. box 40188
philadelphia, pa 19106-0188
email: students@msfc.org
phone: 215.625.0800
www.msfc.org