

[ABOUT US \(../ABOUT\\_US/INDEX.HTML\)](#)[FACULTY \(../FACULTY/INDEX.HTML\)](#)[RESEARCH \(../RESEARCH/INDEX.HTML\)](#)[EDUCATION \(../EDUCATION/INDEX.HTML\)](#)[DIVISIONS \(../INDEX.HTML\)](#)[CENTERS \(../CENTERS/INDEX.HTML\)](#)[PATIENT CARE \(../PATIENT\\_CARE/INDEX.HTML\)](#)

[Home \(../index.html\)](#) » [Our Divisions \(../index.html\)](#) » [Family Planning \(index.html\)](#) » [Meet Our Team](#)

## Meet Our Team



**Carrie Cwiak, MD, MPH** (../faculty/cwiak-carrie.html)

Associate Professor

Division Director, Family Planning

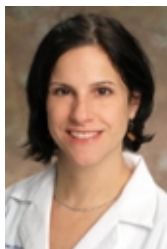
Fellowship Director, Family Planning

Medical Director, Grady Family Planning Clinic



**Erin Berry-Bibee, MD, MPH** (../faculty/berry-bibee-erin.html)

Assistant Professor



**Lisa Haddad, MD, MS, MPH** (../faculty/haddad-lisa.html)

Assistant Professor



**Tiffany Hailstorks, MD** (../faculty/hailstorks-tiffany.html)

Assistant Professor



**Melissa Kottke, MD, MPH, MBA** ([../../faculty/kottke-melissa.html](#))

Associate Professor

Medical Director - Jane Fonda Center for Adolescent Reproductive Health  
(<http://janefondacenter.emory.edu/>)

Medical Director - Grady Teen Clinic



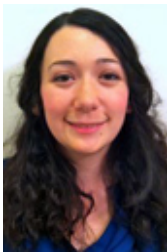
**Eva Lathrop, MD, MPH** ([../../faculty/lathrop-eva.html](#))

Associate Professor



**Megan Lawley, MD** ([../../faculty/lawley-megan.html](#))

PGY6 Fellow and Associate



**Jennifer Reeves, MD** ([../../faculty/reeves-jennifer.html](#))

PGY5 Fellow and Associate



**Peggy Goedken, MPH**

Associate Director, Research Projects



**Sarah D. Cordes, MPH**

Research Coordinator

## **Family Planning ([index.html](#))**

### **Meet Our Team ([meet\\_our\\_team.html](#))**

[Patient Care \(patient-care.html\)](#)

[Our Locations \(our\\_locations.html\)](#)

[Fellowship Program \(fellowship.html\)](#)

**[Female Pelvic Medicine and Reconstructive Surgery \(../pelvic\\_reconstructive\\_surgery/index.html\)](http://www.gynob.emory.edu/divisions/pelvic_reconstructive_surgery/index.html)**

**[General Obstetrics and Gynecology at Emory \(../general\\_ob\\_gyn\\_EHC/index.html\)](http://www.gynob.emory.edu/divisions/general_ob_gyn_EHC/index.html)**

**[General Obstetrics and Gynecology at Grady \(../general-ob-gyn-Grady/index.html\)](http://www.gynob.emory.edu/divisions/general-ob-gyn-Grady/index.html)**

**[Gynecologic Oncology \(../gynecologic\\_oncology/index.html\)](http://www.gynob.emory.edu/divisions/gynecologic_oncology/index.html)**

**[Gynecologic Specialties \(../gynecologic-specialties/index.html\)](http://www.gynob.emory.edu/divisions/gynecologic-specialties/index.html)**

**[Maternal-Fetal Medicine \(../mfm/index.html\)](http://www.gynob.emory.edu/divisions/mfm/index.html)**

**[Reproductive Endocrinology and Infertility \(../rei/index.html\)](http://www.gynob.emory.edu/divisions/rei/index.html)**

**[Research \(../research/index.html\)](http://www.gynob.emory.edu/divisions/research/index.html)**

[EMORY HOME \(http://www.emory.edu\)](http://www.emory.edu) | [CONTACTS \(http://www.emory.edu/home/contact-emory/index.html\)](http://www.emory.edu/home/contact-emory/index.html) | [EMERGENCY \(http://www.emory.edu/home/emergency/index.html\)](http://www.emory.edu/home/emergency/index.html) | [CAREERS \(http://www.hr.emory.edu/eu/careers/\)](http://www.hr.emory.edu/eu/careers/) | [GIVE TO EMORY \(http://www.emory.edu/home/giving/index.html\)](http://www.emory.edu/home/giving/index.html) | [ABOUT EMORY'S WEB \(http://communications.emory.edu/tools/web-guide/about.html\)](http://communications.emory.edu/tools/web-guide/about.html)

[Copyright \(http://communications.emory.edu/tools/web-guide/copyright-dmca.html\)](http://communications.emory.edu/tools/web-guide/copyright-dmca.html) © 2017 Emory University (<http://www.emory.edu/>) - All Rights Reserved | 201 Dowman

Drive, Atlanta, Georgia 30322 USA 404.727.6123