

MAKING BETTER DOCTORS



MEDICAL STUDENTS FOR CHOICE has worked to create tomorrow's abortion providers and pro-choice physicians for the last 15 years. We're doing more than that, though – we are simply helping to make better doctors.

Physicians only provide the care and advice that they know how to provide. With many medical schools and residency programs not providing education in abortion and contraception, this spells disaster for quality health care for women. We know that greater exposure and training on abortion in medical school translates into more doctors offering this kind of care to their patients.¹ MSFC's student activists have an eye on the needs of their future patients and the future of women's health

care: they are front-line advocates at work on their campuses to promote increased education on abortion within the curriculum and opportunities for learning among their fellow students.

MSFC now has over 10,000 members at 134 medical schools across the U.S. and Canada. Approximately 50% of first and second year medical students and 200 residency programs in North America are educated by reproductive health courses and other curriculum changes initiated by MSFC members. More work is needed to ensure that all medical students and residents have access to comprehensive reproductive education, and MSFC continues to fill the gaps in medical education.



MSFC informs, educates, and provides medical students and residents with the necessary information and training on comprehensive reproductive healthcare, so that they are able to inform, educate, and provide the best health care to their future patients. Medical students drive change on their campuses through efforts to improve curriculum. They serve as ambassadors for comprehensive education by bringing educational opportunities to campus.

MSFC offers leadership training opportunities and reproductive health education conferences to both medical students and residents, as well as support and funding for activities. This guidance and funding gives our medical students and residents the tools to succeed in initiating change on their campuses and while becoming the best trained doctor they can be.

Medical Students for Choice continues to create better physicians by producing future abortion providers and pro-choice physicians!

1. With greater exposure and training to abortion education in medical school, students are more likely to offer abortion care as physicians. Steinauer J, Landy U, Filippone H, et al. Predictors of Abortion Provision Among Practicing Obstetrician-Gynecologists: A National Survey. *Am J Obstet Gynecol* 2008; 198.e1-39.e6.

To learn how you can support MSFC's important work, please visit our website at medicalstudentsforchoice.org or call us at (215) 625-0800.

BOARD OF DIRECTORS

Louisa Pyle

PRESIDENT, UNIVERSITY OF ALABAMA, BIRMINGHAM SCHOOL OF MEDICINE

Miranda Balkin

PRESIDENT-ELECT, ALBERT EINSTEIN COLLEGE OF MEDICINE

Lydia Pace, MD

PAST-PRESIDENT, BRIGHAM AND WOMEN'S HOSPITAL

Claire Heslop

SECRETARY, UNIVERSITY OF BRITISH COLUMBIA MEDICAL SCHOOL

Noah Rindos

TREASURER, GEORGE WASHINGTON UNIVERSITY SCHOOL OF MEDICINE

Shannon Connolly

KECK SCHOOL OF MEDICINE, UNIVERSITY OF SOUTHERN CALIFORNIA

Anne Desmond Warden

UNIVERSITY OF CHICAGO

Jessica Gonzalez-Rojas

NATIONAL LATINA INSTITUTE FOR REPRODUCTIVE HEALTH

Sadia Haider, MD

HARVARD MEDICAL SCHOOL

Kimberly Insel

UNIVERSITY OF ARIZONA COLLEGE OF MEDICINE

Rachael Phelps, MD

PLANNED PARENTHOOD OF THE ROCHESTER/SYRACUSE REGION

Susan Podolsky

GEORGE WASHINGTON UNIVERSITY SCHOOL OF MEDICINE

Elise Schuster

COLUMBIA UNIVERSITY MAILMAN SCHOOL OF PUBLIC HEALTH

Robyn Schryer Fehrman, MPA

TRIANGLE COMMUNITY FOUNDATION

Janet Singer, CNM

MIDWIFE

Tina Wheat

UNIVERSITY OF ILLINOIS, CHICAGO COLLEGE OF MEDICINE

NATIONAL COORDINATORS

Sarah Averbach

UNIVERSITY OF CALIFORNIA, SAN FRANCISCO SCHOOL OF MEDICINE

Merritt Evans

YALE UNIVERSITY SCHOOL OF MEDICINE

Stephanie Girton

UNIVERSITY OF IOWA CARVER COLLEGE OF MEDICINE

Rachel Gough

UNIVERSITY OF SASKATCHEWAN COLLEGE OF MEDICINE

Lisa Hofer

EMORY UNIVERSITY SCHOOL OF MEDICINE

REGIONAL COORDINATORS

Autumn Broady

WAYNE STATE SCHOOL OF MEDICINE

Lisa Goldthwaite

OREGON HEALTH AND SCIENCES UNIVERSITY

Meredith Hirshfeld

FEINBERG SCHOOL OF MEDICINE, NORTHWESTERN UNIVERSITY

Rachel Kastl-Casey

GEORGE WASHINGTON UNIVERSITY SCHOOL OF MEDICINE

Bhavik Kumar

TEXAS TECH HEALTH SCIENCES CENTER

Susanne Matias

MIDWESTERN UNIVERSITY ARIZONA COLLEGE OF OSTEOPATHIC MEDICINE

Audrey Merriam

UNIVERSITY OF VERMONT COLLEGE OF MEDICINE

Tara Morse

DES MOINES UNIVERSITY COLLEGE OF OSTEOPATHIC MEDICINE

Sarah Olson

UNIVERSITY OF BRITISH COLUMBIA MEDICAL SCHOOL

Erica Pettigrew

UNIVERSITY OF NORTH CAROLINA, CHAPEL HILL SCHOOL OF MEDICINE

Melania Poonacha

UNIVERSITY OF KENTUCKY COLLEGE OF MEDICINE

Angela Valle

ALBANY MEDICAL COLLEGE

OSTEOPATHIC REPRESENTATIVE

Molly Findley

TOURO COLLEGE OF OSTEOPATHIC MEDICINE, NY

2008 FOUNDATION SUPPORTERS

1661 Foundation

Charla Richards-Kreitzberg Charitable Foundation

Claneil Foundation

The Dickler Family Foundation

The Educational Foundation of America

Wallace Alexander Gerbode Foundation

Lisa and Douglas Goldman Fund

Richard and Rhoda Goldman Fund

William and Flora Hewlett Foundation

Huber Foundation

The Leavens Foundation, Inc.

The Libra Foundation

The John Merck Fund

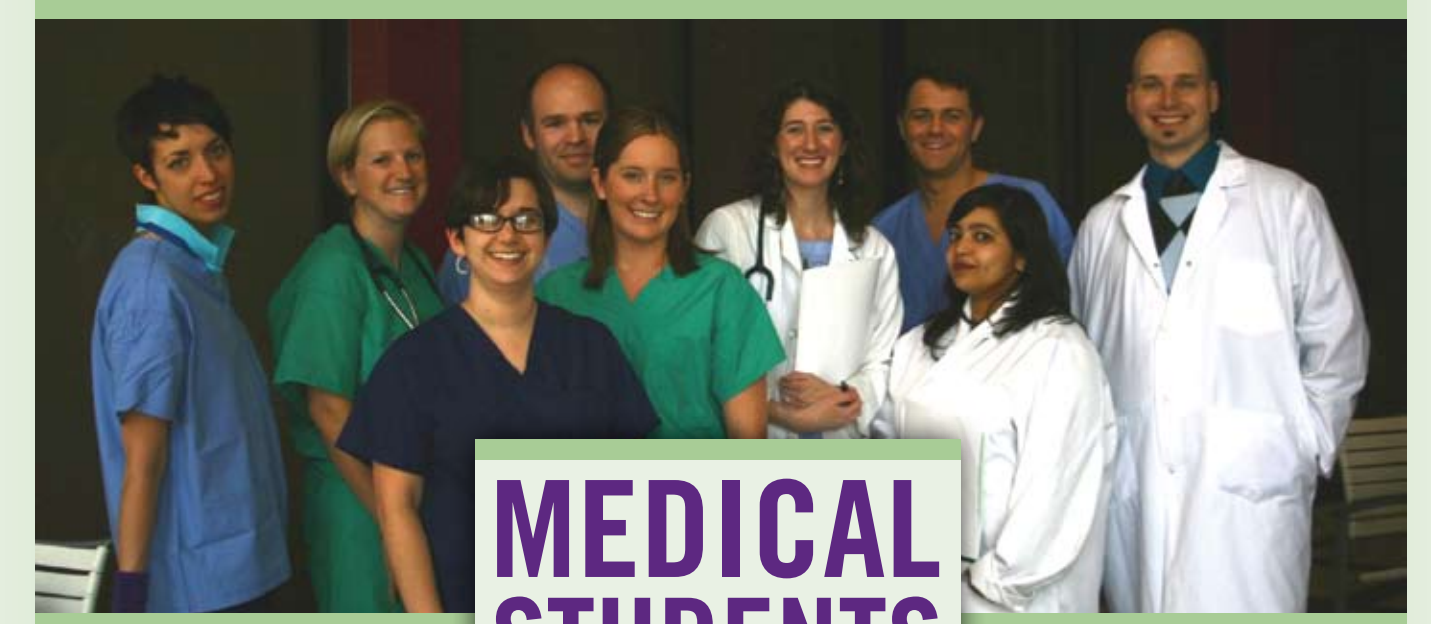
Roth Family Foundation

The Scherman Foundation, Inc.

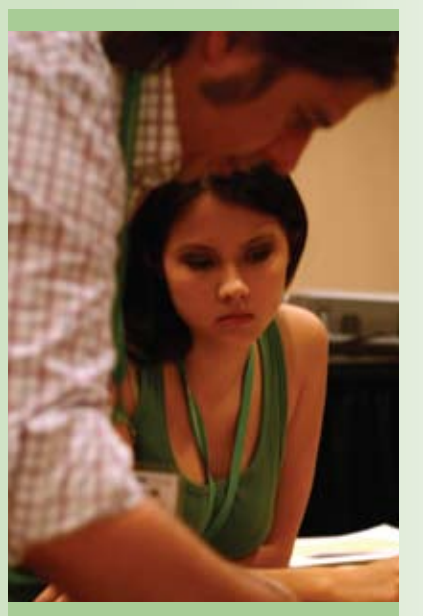
The Mary Wohlford Foundation

MEDICAL STUDENTS FOR CHOICE[™]

CREATING TOMORROW'S ABORTION PROVIDERS



MEDICAL STUDENTS FOR CHOICE



ANNUAL REPORT
2008

PRESIDENT'S UPDATE



2008 HAS BEEN A POWERFUL YEAR for taking stock and moving forward with renewed passion. Here at MSFC, we have been looking back at our first 15 years, celebrating this banner anniversary, gathering energy and cheer from our successes, and recognizing our commitment for the years to come. In this fresh era of hope, those of us in medical training feel we have been called to action. We are poised to continue the work of reforming medical education, and making ourselves into tomorrow's abortion providers and pro-choice physicians.

At 15 years old, MSFC is ever growing, and continues to be nimble and responsive to the needs of our 134 medical school chapters. In response to changes in the modern medical training schedule, the Annual Meeting was moved from the spring to the fall.

Thanks in no small part to our incredible staff, two successful meetings were held in this transition year. We welcomed over 750 students to St. Paul, Minnesota and St. Louis, Missouri. In our second full year at a new office location in Philadelphia, PA, we are seeing the fruits of that move – the closer proximity to several of our sister organizations, and a greater number of medical schools, has strengthened MSFC's activist network and increased our collaborative potential.

In the midst all this change, progress continues toward our strategic goals. Over 90 medical students were trained in abortion care through the Reproductive Health Externship. The Residency Support program continues to expand and gather a base of grassroots support. Every day, in medical schools across North America, my colleagues – a dedicated network of over 10,000 student and resident activists – work to create change; one class, one lecture, and one fellow student at a time. As they take persistent and daring steps toward sustainable curricular change, and organize lectures and host regional conferences, they support each other not only in speaking out, but in simply remaining strong in a training environment that poses great challenge.

In this difficult time of high expectations, constricting resources, and the necessary evaluation of priorities, we are mindful more than ever of that choice made by you, those that fund and support our work. By supporting MSFC you are making a clear statement that the health and safety of women should not, *cannot*, ever be compromised by the ignorance of their healthcare providers. Together, we are creating future abortion providers.

Best Wishes,

Louisa C. Pyle

LOUISA PYLE

M.D./PH.D. CANDIDATE

UNIVERSITY OF ALABAMA — BIRMINGHAM

ACCOMPLISHMENTS

Student Organizing

Medical Students for Choice revitalized and strengthened school groups across North America. Through tireless efforts and outreach, MSFC established nineteen new groups in 2008. MSFC is now represented at 77% of accredited medical schools.

More than 800 campus events were held this year. The MSFC chapter at the University of South Dakota organized two days of events to educate the public on the state's proposed abortion ban, and Medical College of Albany's Week of Choice (which involved dozens of panel discussions, film screenings, and lectures) helped engage and educate the public and students alike. Large events like these, as well as smaller events such as the brown bag lunch lecture on abortion provision hosted by the University of Texas Medical Branch at Galveston, all serve to improve reproductive health education.

The 2008 election season inspired many MSFC groups to host voter education events, as well as organize letter-writing campaigns to publicize the dangerous federal "health care provider conscience" regulations.

Reproductive Health Externship (RHE)

The RHE program creates the next generation of abortion providers by providing opportunities for first-hand abortion training. MSFC saw a 15% increase in RHE participation in 2008, a growth rate we're committed to surpassing each year. Ninety-two students completed externships in 2008, bringing the RHE graduate pool to 740 since the program began in 1995! MSFC is committed to expanding the RHE program among medical students and residents living in rural and underserved communities.

Since its inception in 1995, 86% of RHE externs have reported that, as a result of the program, they are likely to provide abortion services in their future practice. Each year MSFC helps an increasing number of students gain the skills necessary to provide safe, legal abortions. This program would not be possible without the myriad hospitals, clinics, and doctors willing to take on externs in the name of comprehensive reproductive health and the MSFC donors who help fund this vital program.

Leadership Training Program (LTP)

For three intense days, MSFC found its home in Nashville, Tennessee – the "Volunteer State" – while 141 students learned how to combat opposition, maintain a strong school presence through activism, and create the best plan for implementing curriculum reform at their institutions. Student leaders attended workshops like Abortion Myths and Facts, Combating Anti-Choice Rhetoric, Curriculum Reform on Your Campus, Successful Recruitment Strategy, and sessions on event planning and fundraising. Attendees left the weekend feeling empowered in their activism, and full of ideas for leading their chapters successfully.

83 different medical schools were represented at 2008's Leadership Training Program. Students learned the necessary skills to be highly competent campus leaders capable of communicating MSFC's message, expertly directing their school chapters, and resourcefully engaging their administration and peers. As one MSFC member said at the last LTP conference, students leave the conference "ready to return to school and make the change in [their] education!"

Communications

MSFC continues to engage the medical community and spread the word about our mission and programs. A study detailing the positive correlation between students' participation in the RHE program and their intention to provide abortion care in their future practice was published in the

July 2008 edition of *Contraception*. MSFC also garnered media attention with an article in *The Washington Post* detailing the experience of an MSFC member over the course of her career in medical school, as well as articles featuring MSFC at online media outlets like Women's eNews and RH Reality Check.

As part of MSFC's commitment to expanding visibility in the medical world and beyond, we are increasing our internet presence and utilizing social networking systems. With the goal of increasing user-friendliness and providing MSFC members and the general public with up-to-date information about MSFC programs, conferences, and news, MSFC's website underwent a critical overhaul. The website now integrates Twitter and YouTube as well as various other social networking components. We continue to use Facebook, MySpace, and Twitter to communicate with medical students, residents, pro-choice activists and supporters of our work.

Additionally, MSFC presented posters focused on the results of our programs at two conferences this year. Presentations were given at the national conferences of the Association of Reproductive Health Professionals (ARHP) in Washington, and the National Abortion Federation. MSFC also exhibited at national conferences of the American Academy of Family Physicians (AAFP), and the American Medical Student Association (AMSA).

Resident Support Program

In 2005 MSFC developed a listserv to support the needs of the residents. In just three years this service has grown to include over 800 members. MSFC's mentoring project provides residents with opportunities to serve as junior faculty at the Annual Meetings. The RHE program has grown to include residents as well, continuing our mission to facilitate comprehensive reproductive healthcare training for those in need. MSFC has also updated its Residency Guides for OB/GYN and Family Medicine residency programs to better suit the needs of its constituency.

We are currently analyzing survey data received from residency program directors and others in order to gauge which residency programs are offering abortion training and in what format. This data will help us develop more programming to support residents and help them access a comprehensive reproductive education.

Annual Meeting

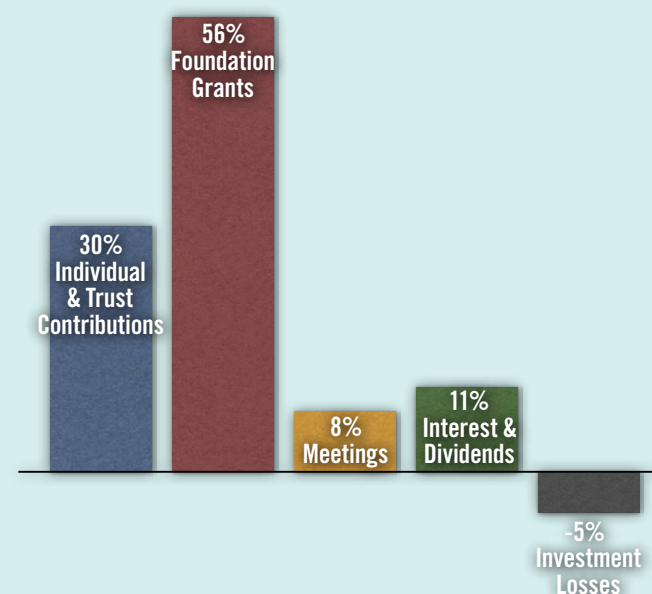
2008 was a time of transition for the MSFC Annual Meeting. A change in the timing of the meeting required that we had both Spring and Fall Annual Meetings. MSFC members enjoyed twice the learning opportunities for which the Annual Meeting is famous! The Spring Annual Meeting, held in St. Paul, Minnesota, gathered 348 students from 98 medical schools, while over 400 students from 90 medical schools assembled in St. Louis, Missouri for our Fall Annual Meeting. Both meetings included a diverse faculty, cutting-edge medical education, and sessions on the religious, social, and political ramifications of abortion provision designed to engage and educate our members. The Annual Meeting inspires our members to strive for change in medical schools, residency programs, and the world.

Always the most popular offerings at every Annual Meeting, hands-on skills workshops help medical students learn valuable clinical skills. At our 2008 Annual Meetings, MSFC offered workshops on the Manual Vacuum Aspiration procedure, No-Scalpel Vasectomy technique, and Implanon™ insertion. Students also attended abortion provider panel discussions, as well as workshops focused on fetal anomalies counseling and health care disparities.

FINANCIAL STATEMENT 2008

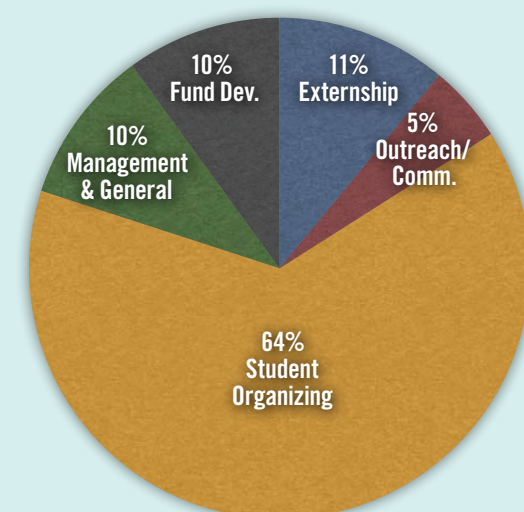
INCOME

Individual & Trust Contributions	\$223,000	30%
Foundation Grants	412,000	56%
Annual Meetings	55,000	8%
Interest & Dividend Income	78,000	11%
Net Gains (Losses) on Investments	(36,000)	-5%
TOTAL REVENUES AND SUPPORT	\$732,000	



EXPENSES

Externship	\$153,000	11%
Outreach and Communications	70,000	5%
Student Organizing	886,000	64%
Management and General	131,000	10%
Fund Development	134,000	10%
TOTAL EXPENSES	\$1,374,000	



CHANGE IN UNRESTRICTED NET ASSETS	(\$642,000)
--	--------------------

FUND BALANCES

Temporarily Restricted Funds	\$1,082,000
Unrestricted Funds	1,573,000
TOTAL FUND BALANCES	\$2,655,000