

[Skip to main content](#)  
[The University of Pittsburgh](#)



University of Pittsburgh

Original document found online at: <https://www.obgyn.pitt.edu/fellowships>

## Fellowships

The Department of Obstetrics, Gynecology and Reproductive Sciences at Magee-Womens Hospital of UPMC Offers seven clinical fellowship programs and several combined clinical fellowship programs.



### Maternal-Fetal Medicine

The ABOG-accredited [Maternal-Fetal Medicine](#) fellowship program at Magee-Womens Hospital of UPMC and the University of Pittsburgh is a three year program that offers three positions per year. Interested individuals must have completed an ACGME-accredited residency in Obstetrics and Gynecology.



### Medical Genetics Residency

The two year ACGME-accredited [graduate medical education program](#) in medical genetics at the University of Pittsburgh provides the formal instruction and appropriately supervised clinical experience necessary for residents to develop the knowledge, skills, and attitudes essential to the practice of clinical medical genetics. This program is for physicians (MD, DO, MD/PhD) who have completed an entire ACGME-accredited residency in another specialty, and who can obtain a medical license in the Commonwealth of Pennsylvania.



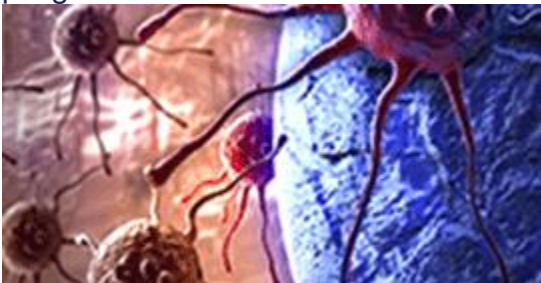
### Reproductive Endocrinology and Infertility

The ABOG-accredited [Reproductive Endocrinology and Infertility](#) fellowship program at Magee-Womens Hospital of UPMC and the University of Pittsburgh offers one position per year. This three year curriculum is designed for individuals who have completed an ACGME-accredited residency in Obstetrics and Gynecology.



### Female Pelvic Medicine and Reconstructive Surgery

The ACGME-accredited fellowship in [Female Pelvic Medicine and Reconstructive Surgery](#) at Magee-Womens Hospital of UPMC and the University of Pittsburgh is designed as a three year curriculum for individuals who have completed residency training in obstetrics and gynecology or urology in an ACGME -accredited residency program.



### Gynecologic Oncology

The ACGME approved fellowship in [Gynecologic Oncology](#) at Magee-Womens Hospital of UPMC and the University of Pittsburgh offers two positions per year for this three-year fellowship. Applicants are required to have completed a residency program in Obstetrics and Gynecology in an ACGME -accredited residency program.



## Reproductive Infectious Diseases and Immunology

The [Reproductive Infectious Diseases Fellowship](#) at Magee-Womens Hospital of UPMC and Magee-Womens Research Institute offers one position per year. This two-year program works in collaboration with the Graduate School of Public Health at the University of Pittsburgh as well as University of Pittsburgh researchers.



## Minimally Invasive Gynecologic Surgery

Our [Minimally Invasive Gynecologic Surgery](#) fellowship is a two year academic fellowship that offers one or two positions per year. This fellowship incorporates clinical, research, and teaching responsibilities in the Department of Obstetrics, Gynecology and Reproductive Sciences at Magee-Womens Hospital of UPMC and the University of Pittsburgh.



## Family Planning

The fellowship in [Family Planning](#) at Magee-Womens Hospital of UPMC and the University of Pittsburgh is available to individuals who have completed residency training in obstetrics and gynecology. The Department has designed three programs for individuals with a strong interest in pursuing a career in academic medicine to include excellence and leadership in education, research, and patient care. These programs are:

1. Family Planning (2 years)

2. Combined Family Planning and Reproductive Genetics (3 years)
3. Combined Family Planning and Reproductive Infectious Diseases (3 years)

## FELLOWSHIPS

- MATERNAL-FETAL MEDICINE
- MEDICAL GENETICS RESIDENCY
- REPRODUCTIVE ENDOCRINOLOGY & INFERTILITY
- FEMALE PELVIC MEDICINE & RECONSTRUCTIVE SURGERY
- GYNECOLOGIC ONCOLOGY
- REPRODUCTIVE INFECTIOUS DISEASES & IMMUNOLOGY
- MINIMALLY INVASIVE GYNECOLOGIC SURGERY
- FAMILY PLANNING



## Magee-Womens Hospital

[Magee-Womens Hospital](#) of UPMC is the obstetrical and gynecological teaching hospital of the University of Pittsburgh School of Medicine.



## University of Pittsburgh Medical Center

The [University of Pittsburgh Medical Center](#) has a primary service area of 29 western Pennsylvania counties and includes 19 hospital and 10 affiliated hospitals.



Department of

# Obstetrics, Gynecology, Reproductive Sciences

Magee-Womens Hospital of UPMC

[300 Halket Street](#)

[Pittsburgh, PA 15213](#)

412-641-1000

Resources

- [Institutional Review Board \(IRB\)](#)
- [School of Medicine](#)
- [Office of Human Resources](#)
- [School of Pharmacy](#)
- [Office of Clinical Research](#)
- [School of Nursing](#)
- [School of Dental Medicine](#)
- [School of Public Health](#)
- [Office of Research Health Sciences](#)
- [Office of Technology Management](#)

Revised 08/08/17 Copyright 2017 [Site by Communications Services Web team](#)