

OPEN

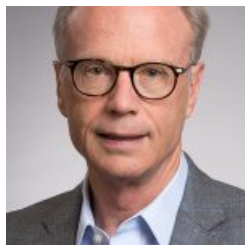
Ohio Policy Evaluation Network

[HOME](#)
[ABOUT US](#)
[RESEARCHERS](#)
[PUBLICATIONS](#)
[RESEARCH AREAS](#)
[EVENTS](#)
[OPEN IN THE NEWS](#)

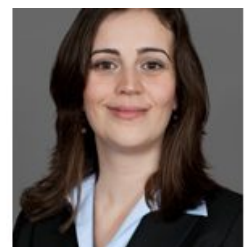
Co-Investigators



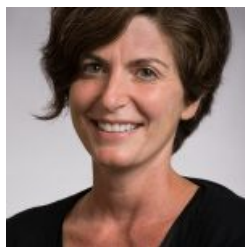
Aalap Bommaraju | Ph.D. Student in the Department of Sociology at UC. Bommaraju earned their MPH in health policy from UC and has five years of experience coordinating grant reporting for the Cincinnati Health Department's Title X-funded family planning program. Their research focuses on race, class, and gender inequality in reproductive health care and outcomes. Their current work focuses on understanding how family planning practitioners at safety-net family planning clinics interpret their patients' intentions toward pregnancy.



John Casterline | Lazarus Professor in Population Studies and Director of the Institute for Population Research at The Ohio State University (OSU). Dr. Casterline holds a Ph.D. in Sociology/Demography from the University of Michigan and prior to joining OSU held positions at the Population Council, Brown University, and the World Fertility Survey. His scholarly career has been devoted to research on reproductive health, specifically fertility and contraception in non-Western low-resource settings in Asia, Africa, and the Arab Region.



Lenisa V. Chang | Associate Professor of Economics at the University of Cincinnati. Dr. Chang completed her MA and Ph.D. in Economics from Michigan State University. Her research focuses on the intersection of health economics and public policy especially as they apply to prevention, public health, and the Medicaid program. Dr. Chang uses economic theory and statistical tools to evaluate the effectiveness of programs large and small, from national policies to local programs and usually in an interdisciplinary setting. Dr. Chang has evaluated the benefits of peer-to-peer counseling to increase breastfeeding among low-income mothers; assessed the effectiveness of state insurance mandates in the uptake of infant immunizations; and examined changes in Medicaid spending by state following the introduction of generic drugs. Currently, Dr. Chang is studying prior authorization prescription policies in Ohio Medicaid, and physicians' perceptions of public reporting measures and pay-for-performance incentives.



Cynthia Colen | Associate Professor of Sociology at OSU. Dr. Colen's current research investigates linkages between racial and ethnic inequalities, status attainment processes, and health outcomes. She also focuses on rural/urban patterning of morbidity and mortality and the role of kinship networks as sources of resiliency among marginalized populations. Her most recent work focuses on black/white disparities in mental health outcomes, such as suicide.



Lisa Frazier | Doctoral Candidate in Public Policy & Management at OSU. Frazier earned her MPH in epidemiology from Ohio State, then spent several years in Columbus conducting research and analysis of state and national health policy. Her dissertation research focuses on using simulation models to identify administrative leverage points in Medicaid to improve system performance and increase enrollment of eligible individuals. Her research interests include sexual and reproductive health policy, decision making in public policy, systems and computational modeling, and health equity and justice considerations.



Maria Gallo | Associate Professor of Epidemiology at OSU. Dr. Gallo earned her MSW, MSPH, and Ph.D. at the University of North Carolina, Chapel Hill. Dr. Gallo's research broadly focuses on sexual and reproductive health including abortion, contraception, and HIV/STIs. She has worked for almost 15 years on the development and application of semen biomarkers to improve methods for assessing sexual risk. During her tenure at FHI 360, Ipas and CDC, she conducted primary data collection in settings in Asia, Africa, and the Caribbean. This work has resulted in 75 peer-reviewed publications, including numerous meta-analyses and systematic reviews.



Priya Gursahaney | Assistant Professor of Obstetrics and Gynecology at the University of Cincinnati School of Medicine. Dr. Gursahaney earned her Medical Degree (MD) and Masters of Science in Clinical Research (MSCR) at the University of Pittsburgh. After residency, she completed a Pelvic Surgery Fellowship at Emory University, during which time she also participated in a Family Planning research study assessing factors associated with condom use in HIV positive women. Her previous research centered on partner notification of sexually transmitted diseases and expedited partner therapy. Dr. Gursahaney is a practicing OB/GYN with a special interest in gynecologic surgery and family planning, specifically abortion care.

Sarah Hayford | Associate Professor of Sociology at the Ohio State University. Dr. Hayford earned her Ph.D. in Demography from the University of Pennsylvania. Dr. Hayford studies family formation and reproductive health, primarily in the United States and sub-Saharan Africa. Specifically, her fertility-related research examines fertility intentions and behavior,