


Elizabeth Bates, MD


Physician

Bethel, Alaska

Medical Practice

 Yukon Kuskokwim Health Corporation

 Swedish Medical Center

 Jefferson Medical College of Thomas  
Jefferson University

119 connections

View Elizabeth Bates, MD'S full profile. It's free!

Your colleagues, classmates, and 500 million other professionals are on LinkedIn.

Sign in

## Summary

Rural and women's health provider.

## Experience



Physician  
Yukon Kuskokwim Health Corporation  
August 2018 – Present • 9 months  
Bethel, AK

---



Physician  
Summit Medical Center  
July 2018 – Present • 10 months  
Detroit, Michigan

---



Physician  
Women's Center of Flint and Saginaw  
July 2018 – Present • 10 months  
Flint, Michigan

---



Junior Fellow  
Society of Family Planning  
July 2018 – Present • 10 months

---



Resident Physician  
Swedish Medical Center  
June 2015 – June 2018 • 3 years 1 month  
Greater Seattle Area

---



Intern- Research and Emergency Response  
American Refugee Committee  
April 2015 – May 2015 • 2 months  
Rwanda

Investigated prevalence of family planning use, attitudes, and barriers among Congolese refugees from two camps in Rwanda. Assisted with data coordination and nutrition sector for emergency response to Burundian crisis in Mahama Camp, Kirehe district. Worked with IPs including UNHCR, WFP, UNFPA, UNICEF and Plan International.

---



Clinic Director  
Refugee Health Partners

March 2012 – May 2015 • 3 years 3 months  
Greater Philadelphia Area

Co-founded small bi-monthly student-run clinics in Philadelphia, serving Bhutanese, Karen, and Kachin refugees. Clinics provided free acute care, advocacy, and professional development. Responsibilities include coordinated medical students, physicians, inventory, interpretation, and working with community partners.

Teacher  
Migrant Education of Philadelphia

June 2012 – March 2015 • 2 years 10 months  
South Philadelphia

Taught literacy, ESL, and health promotion to children of refugee families. Helped coordinate education workshops for adult non-English speakers on diverse topics from chronic disease to meditation.

Community Volunteer  
Philadelphia Refugee Mental Health Collaborative

April 2012 – March 2015 • 3 years  
Greater Philadelphia Area

Worked to support programming and referrals to PRMHC. Coordinated monthly women's groups with participants from Bhutan, Burma, Iraq, West Africa and Haiti.



Disaster Relief Volunteer  
American Red Cross

October 2005 – November 2005 • 2 months  
Gulfport, MS

Worked aboard Emergency Response Vehicles in Gulfport, MS. as a part of the coordinated response following Hurricane Katrina. Responsibilities included volunteer coordination, logistics, and case management.



AmeriCorps Member  
AmeriCorps NCCC

September 2001 – August 2002 • 1 year  
Washington DC

A team based program, assisted with community service projects throughout the Mid-Atlantic region, including Habitat for Humanity, Parks and People, etc. Responsibilities included volunteer coordination, project development, and outreach.

Disaster Relief Volunteer  
American Red Cross Greater New York



December 2001 – December 2001 • 1 month  
Greater New York City Area

Worked with the American Red Cross to follow up with displaced residents affected by the September 11th attacks. Responsibilities included case management, street outreach, and resource coordination for acute needs.

## Education



Jefferson Medical College of Thomas Jefferson University  
Doctor of Medicine (MD), Medicine  
2011 – 2015

Activities and Societies: Gold Humanism Society



The College of William and Mary  
English Language and Literature, General

## Skills & Endorsements

[Join LinkedIn to see Elizabeth's skills, endorsements, and full profile](#)

## View Elizabeth Bates, MD'S full profile to...

- See who you know in common
- Get introduced
- Contact **Elizabeth Bates, MD** directly

Sign in

People also viewed



Michelle Forgey-Joyner  
Human Resources at Weaver U.S.D.



Kimberly Welker  
Relationship Manager with SmartBank/Personal and Small Business Lending Specialist



Chris Gifford, Pharm.D.  
Assistant Manager Pharmacy at Orlando Health



Serin Seckin  
Resident Physician at Mount Sinai Health System



Laxman Dulal



Sonia At Bucklands O Grant  
Practice Manager at MAT-SU NEUROLOGY, LLC



Kelly Hall  
President at Goodson Bros. Coffee Co., Inc



Sara Larson Braun  
Psychotherapist



Christi Bothe  
Sr. Director of Operations - Brooklyn Water Bagel Company



James Elano  
Drug and Alcohol Program Administrator at Beacon Occupational Health and Safety Services

---

Search for other people you know

---

Promoted



Affordable Event Space  
Great for events & parties - Full Service -  
Catering - Free Parking >



Wyoming or Nevada LLC?  
We show you why Wyoming is better  
than Nevada. And less money too! >



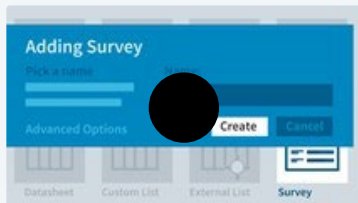
Sell More with PunchOut  
Quickly create powerful PunchOut  
websites and sell to enterprise customers >

---

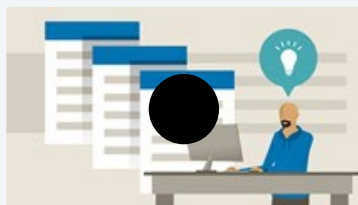
Learn new skills with online courses



Office for Educators



SharePoint for Enterprise: Create Web Surveys



Word Quick Tips

[View all online courses](#)

---

Elizabeth's public profile badge

Include this LinkedIn profile on other websites

Elizabeth Bates, MD

Physician

Physician at Yukon Kuskokwim Health Corporation



Jefferson Medical College of Thomas Jefferson University

[View profile](#)

[View profile badges](#)

---

© 2019

[About](#)

[User Agreement](#)

[Privacy Policy](#)

[Cookie Policy](#)

[Copyright Policy](#)

[Brand Policy](#)

[Guest Controls](#)

[Community Guidelines](#)

[Language](#)