



FIND A DOCTOR LO

/ Programs & Services / Gynecology / Programs & Services / Family Planning Program / Expert Team

Share Email Print

Family Planning Program

Expert Team

Meet the Family Planning Expert Team

Our board-certified obstetricians and gynecologists, or OBGYNs, deliver expertise in family planning services. These services include birth control options and pregnancy planning. Their experience and training help them set a high standard of care for both men and women, including those with complex health conditions. Equipped with the latest tools and techniques, our specialists are ready to help you determine the right options for you.

Tania B. Serna, MD



Director, Ryan Program

SPECIALTY LOCATIONS

Obstetrics [Minimally](#) [VIEW](#) 310-423-9268
& [Invasive](#) [FULL](#) 1-800-CEDARS-1
Gynecology [Gynecology](#) [PROFILE](#)
[Surgery](#)
[Center](#)

Bryna J. Harwood, MD

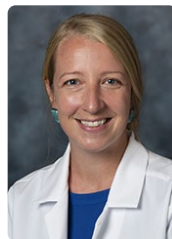


Director, Obstetrics and Gynecology Residency Program

SPECIALTY LOCATIONS

Obstetrics [Minimally](#) [VIEW](#) 310-423-9268
& [Invasive](#) [FULL](#) 1-800-CEDARS-1
Gynecology [Gynecology](#) [PROFILE](#)
[Surgery](#)
[Center](#)

Natasha R. Schimmoeller, MD



SPECIALTY LOCATIONS

Obstetrics [Minimally](#) [VIEW](#) 310-423-9268
& [Invasive](#) [FULL](#) 1-800-CEDARS-1
Gynecology [Gynecology](#) [PROFILE](#)
[Surgery](#)
[Center](#)

Many of the physicians who have medical staff privileges to practice medicine at Cedars-Sinai Medical Center are independent physicians, and not employees or agents of the hospital. These independent physicians bill separately for their services. You should contact your physician to determine their status and billing practices.

Our Location

Cedars-Sinai Family Planning Program
Mark Goodson Building, Suite 1003
444 S. San Vicente Blvd.
Los Angeles, CA 90048

[GET DIRECTIONS](#)

Make an Appointment or Refer a Patient

Call us to make an appointment. If you'd like to refer a patient, fax medical records to [310-423-9777](tel:310-423-9777) ..

[310-423-9999](tel:310-423-9999)

CONTRIBUTE

[Donate](#)

[Volunteer](#)

LEARN MORE

[About Us](#)

[Quality Measures](#)

[Our Medical Network](#)

[Nondiscrimination](#)

[Purchasing](#)

FOR PROFESSIONALS

[Resources](#)

[Staff Directory](#)

[Staff Login](#)

CONNECT

[Contact Us](#)

[Newsroom](#)

[Blog](#)

[Events](#)

INTERNATIONAL

[CALL US](#)
[International Patients](#)

JOIN OUR TEAM

[Careers](#)

[FOLLOW US](#)

[GET OUR APP](#)

