



Tania Basu
Assistant Clinical Professor of Obstetrics and Gynecology
San Diego, California
Hospital & Health Care

- Cedars-Sinai
 - UCLA Olive View Medical Center
 - University of California, Berkeley
- 43 connections

View Tania Basu's full profile. It's free!
Your colleagues, classmates, and 500 million other professionals are on LinkedIn. [Sign in](#)

Tania Basu's Activity
[See all activity](#)

- Tania Basu liked this
When our docs aren't taking excellent care of patients in...
- Tania Basu liked this
In addition to being the experts in reproductive care, we...
- Tania Basu liked this
Just the tip of the iceberg of a problem that is currently...
Team from UCLA Luskin Social Welfare travels to immigrant detention center in Texas to counsel...

Experience

- Ryan Program Director**
Cedars-Sinai
September 2018 - Present • 4 years 10 months
Los Angeles, CA
- Resident Physician**
UCSD Medical Center
- Clinical Professor of Obstetrics and Gynecology**
UCLA Olive View Medical Center
September 2012 - July 2014 • 1 year 11 months

Education

- University of California, Berkeley**
Bachelor of Arts - BA, Cell/Cellular and Molecular Biology
1997 - 2001

Skills & Endorsements

Join LinkedIn to see Tania's skills, endorsements, and full profile

View Tania Basu's full profile to...
• See who you know in common
• Get introduced to...
• Connect with Tania Basu directly
[Sign in](#)

People also viewed

- Angiana Basu - MA, MBA**
Human Resource/Talent Acquisition/ Training - Available to new opportunities immediately

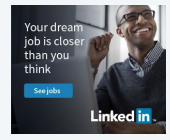
Search for other people you know



Find a different Tania Basu

- Tania Basu
United States
- Tania Basu
Orange County, California Area

More professionals named Tania Basu



Tania's public profile badge
Include this LinkedIn profile on other websites

Tania Basu
Assistant Clinical Professor of Obstetrics and Gynecology
 Ryan Program Director at Cedars-Sinai

 University of California, Berkeley

[View profile](#)

[View profile badges](#)