



2014-2015 PHOENIX INTEGRATED RESIDENCY IN OBSTETRICS AND GYNECOLOGY

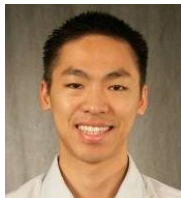


PGY 4



GEETHA FINK, MD
CHICAGO MED. SCH. AT
ROSALIND FRANKLIN UNIV.
OF MEDICINE & SCIENCE

PGY 4



SONTY MAN, MD
NEW YORK
MEDICAL COLLEGE

PGY 4



ALEKSANDER ROBLES, MD
UNIV OF CA. AT DAVIS
SCHOOL OF MEDICINE

PGY 4



SARAH SHARER, MD
UNIVERSITY OF AZ
COLLEGE OF MEDICINE

PGY 4



KRISTIN SHIELDS, MD
UNIV. OF COLORADO
DENVER SCH. OF MED.

PGY 4



MEGHAN WALLMAN, MD
CREIGHTON UNIVERSITY
SCHOOL OF MEDICINE

PGY 4



LAUREN WELCH, MD
UNIVERSITY OF TOLEDO
COLLEGE OF MEDICINE

PGY 3



LINDSAY ALLEN, MD
WAYNE STATE UNIVERSITY
SCHOOL OF MEDICINE

PGY 3



SARAH BASCLE, MD
TULANE UNIVERSITY
SCHOOL OF MEDICINE

PGY 3



MARISSA BROWN, MD
ROSS UNIVERSITY

PGY 3



HEATHER BUTTS, MD
MARSHALL UNIVERSITY
SCHOOL OF MEDICINE

PGY 3



JESSICA HUARD, MD
RUSH MEDICAL COLLEGE

PGY 3



NICHOLE LIGGINS, MD
TXA & M UNIVERSITY
COLLEGE OF MEDICINE

PGY 3



LINDSEY MINION, MD
CREIGHTON UNIVERSITY
SCHOOL OF MEDICINE

PGY 3



TIFFANY PERRY, MD
SAINT LOUIS UNIVERSITY
SCHOOL OF MEDICINE

PGY 3



KRISTL TOMLIN, MD
ROYAL COLLEGE OF
SURGEONS IN IRELAND

PGY 2



**DOMINIQUE BARNES, MD
(NICKI)** TEXAS A&M HSC
COL. OF MED.

PGY 2



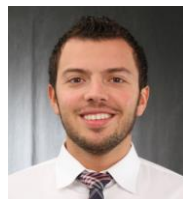
CHELSEA DRAKE, MD
UNIV. OF WASHINGTON
SCH. OF MED.

PGY 2



JENNIFER GUSTAFSON, MD
UNIV. OF MIAMI LEONARD M.
MILLER SCH. OF MED.

PGY 2



BASEL IMAM, MD
UNIV. OF ARIZONA
COL. OF MED.

PGY 2



BINDU PATEL, MD
UNIVERSITY OF ILLINOIS
COL. OF MED.

PGY 2



**JACQUELINE PLACETTE, MD
(JACKIE)** GEORGE WASHINGTON
UNIV. SCH. OF MED.

PGY 2



TRAVIS POWELL, MD
UNIVERSITY OF ARIZONA
COL. OF MED.

PGY 2



**ANNA TROXLER, MD
(GRETCHEN)** UNIV. OF TX
SOUTHWESTERN MED. SCH.

PGY 1



IRIS ADIPUE, MD
MEDICAL COLLEGE
OF WISCONSIN

PGY 1



JOANNA CAMPODONICO, MD
INDIANA UNIVERSITY
SCHOOL OF MEDICINE

PGY 1



ADRIAN GARZA, MD
UNIVERSIDAD AUTÓNOMA
DE GUADALAJARA
FACULTAD DE MEDICINA

PGY 1



RACHAEL HAVERLAND, MD
TEXAS A&M HEALTH SCIENCE
CENTER COLLEGE OF MEDICINE

PGY 1



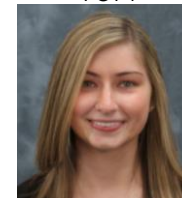
ERIN HEFLEY, MD
UNIVERSITY OF ARIZONA
COLLEGE OF MEDICINE

PGY 1



NATASHA MEHANDRU, MD
ROYAL COL. OF SURGEONS IN
IRELAND SCHOOL OF MEDICINE

PGY 1



ALEXANDRA RZEPKA, MD
MEDICAL COLLEGE
OF WISCONSIN

PGY 1



SONAM SINGH, MD
UNIVERSITY OF ARIZONA
COLLEGE OF MEDICINE

PGY 1



ANDREA TURNER, MD
UNIVERSITY OF LOUISVILLE
SCHOOL OF MEDICINE