

Jefferson University Hospitals

Patients & Guests | Our Locations
| News | Classes & Events

[Home](#)

[Find a Doctor](#)

[Diseases & Conditions](#)

[Tests & Treatments](#)

[Departments & Services](#)

[Quality & Safety](#)

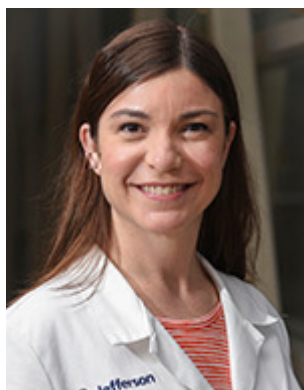
[REQUEST AN APPOINTMENT](#)

[About Us](#)

[JEFFERSON HEALTH MYCHART](#)

[CALL 1-800-JEFF-NOW](#)

[HOME](#) > [PHYSICIAN DIRECTORY](#)



[BOOKMARK](#)

[SHARE PROFILE](#)

Accepting New Patients

PATIENT RATING

4.8/5 stars

Lisa K Perriera MD,MPH

Jefferson University Physician

ACADEMIC TITLE

Associate Professor

Gynecologic Specialties Division Director
Ryan Residency Training Program Director
Title X Clinic Medical Director

SPECIALTY

Gynecology

Book an Appointment

If you have a Jefferson Health MyChart account you can directly schedule within MyChart.

MyChart Username

[Forgot MyChart Username?](#)

Password

[Forgot Password?](#)

SIGN

[En Español](#) | [Sign Up for an Account](#)

Online Scheduling

We were unable to locate appointments using your selections. So serve you better, please call 1-800-JEFFNOW.

Overview

Departments & Programs

[Gynecology & Women's Services](#)

Conditions

[Dysmenorrhea](#)
[Endometriosis](#)

[Miscarriage](#)

Treatments

[Dilation & Curettage](#)

[Endometrial Ablation](#)

Education & Fellowships

SUNY at Stony Brook School of Medicine, Medical School
University of Pittsburgh - Graduate School Of Public Hlth, Medical School
Internship: New York University Medical Center
[SHOW MORE EDUCATION](#)

Years in Practice

13

Board Certification

Obstetrics and Gynecology

Hospital Affiliation

Thomas Jefferson University Hospitals
Jefferson Methodist Hospital

Insurances Accepted

Jefferson physicians accept most health insurance plans, including those listed below. However, plan acceptance may vary by and may be subject to change. If you have questions about whether a specific physician accepts your insurance, please contact your insurance company.

Aetna

Aetna Better Health

Aetna Medicare

[SHOW MORE INSURANCES](#)

Aetna PA Employee Benefit Trust Fund (

AmeriHealth

AmeriHealth Comprehensive

Patient Ratings

Friendliness/courtesy of the care provider:

[SHOW RATINGS](#)

[Learn more about Pat](#)

Awards

C. Lalor Burdick Award 2014

[SHOW AWARDS](#)

Publications

[Intrauterine Device Insertion Procedure Duration in Adolescent and Young Adult Women](#)

[SHOW PUBLICATIONS](#)

Locations

833 Chestnut Street

Floor 1

Philadelphia, PA 19107

Phone: (215) 955-5000

Fax: (215) 923-1089

[GET DIRECTIONS](#)

[CAREERS](#)[GIVE NOW](#)

HOME OF SIDNEY KIMMEL MEDICAL COLLEGE

[Jefferson Main](#)[Leadership](#)[Jefferson Blogs](#)[University Admissions](#)[Patient Appointments](#)

JEFFERSON UNIVERSITY HOSPITALS

[Find a Doctor](#)[Diseases & Conditions](#)[Tests & Treatments](#)[Departments & Services](#)[Quality & Safety](#)[About Us](#)[News](#)[Classes & Events](#)[Our Locations](#)[Contact Us](#)[Sitemap](#)

EXPLORE THE REST OF JEFFERSON

[THOMAS JEFFERSON UNIVERSITY](#)[JEFFERSON HEALTH](#)[JEFFERSON PHYSICIANS](#)[JEFFERSON INNOVATION](#)[JEFFERSON PHILANTHROPY](#)

The Web site for Thomas Jefferson University Hospitals, its contents and programs, is provided for informational and educational purposes only and is not intended as medical advice nor, is it intended to create any physician-patient relationship. Please remember that this information should not substitute for a visit or a consultation with a healthcare provider. The views or opinions expressed in the resources provided do not necessarily reflect those of Thomas Jefferson University Hospitals, Thomas Jefferson University or their staffs. By using this Web site, you accept these [terms of use](#). Please read our [online privacy statement](#). Please read our [privacy practices](#).

Copyright © 2019 Thomas Jefferson University Hospitals. All Rights Reserved.