

Anne Elizabeth Burke, MD, MPH
Obstetrics & Gynecology Nottingham, MD

See the full profile

Dr. Burke is on Doximity
As a Doximity member you'll join over a million verified healthcare professionals in a private, secure network.

- ➞ Connect with other colleagues in the same hospital or clinic
- ➞ Search all U.S. specialist profiles and refer a patient
- ➞ Read the latest clinical news and earn CME/CEU credits

[See Dr. Burke's f...](#)

Already have an ...

Office Address

4924 Campbell Boulevard, Suite
225
Nottingham, MD 21236

Phone

☎ (443) 997-0400

[Is this information wrong?](#)

Education & Training



Pennsylvania Hospital - University of Pennsylvania Health System
Residency



University of Pittsburgh School of Medicine



Anne Elizabeth Burke, MD, MPH
Obstetrics & Gynecology Nottingham, MD

Licensure



2000 - 2020

American Board of Obstetrics and Gynecology
Obstetrics & Gynecology

Awards, Honors, &
Recognition

Fellow (FACOG)
American Congress of Obstetricians and Gynecologists

Publications &
Presentations

PubMed

Acceptability of the Woman's condom in a phase III multicenter open-label study.

Chen, B. A., Blithe, D. L., Muraguri, G. R., Lance, A. A., Carr, B. R., Jensen, J. T., Kimble, T. D., Murthy, A. S., Schreiber, C. A., Thomas, M. A., Walsh, T. L., Westhoff, C., B... > ; Contraception. 2019 Mar 09

Segesterone acetate/Ethinyl estradiol 12-month contraceptive vaginal system safety evaluation.

Gemzell-Danielsson, K., Sitruk-Ware, R., Creinin, M. D., Thomas, M., Barnhart, K. T., Creasy, G., Sussman, H., Alami, M., Burke, A. E., Weisberg, E., Fraser, I., Miranda, M. J., G... > ; Contraception. 2019 Mar 05

Rates of regression of cervical dysplasia between initial biopsy and excisional procedure in routine clinical practice.

Mark, K., Frost, A., Hussey, H., Lopez-Acevedo, M., Burke, A. E., Edwardson, J., Solaru, O., Gravitt, P. > ; Arch. Gynecol. Obstet.. 2019 Jan 05

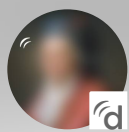
22 more in this section...

[Join now to see the full profile](#) ➔

Press Mentions



Weight Gain and Bigger Boobs Are Birth Control Myths
December 17, 2019



Anne Elizabeth Burke, MD, MPH
Obstetrics & Gynecology Nottingham, MD

3 more in this section...

[Join now to see the full profile](#) ➔

Professional
Memberships

American College of Obstetrics and Gynecology - ACOG
Fellow

Other Languages

Spanish

Hospital Affiliations



Johns Hopkins Hospital
Baltimore, Maryland



Johns Hopkins Bayview Medical Center
Baltimore, Maryland

External Links

Johns Hopkins Physicians
<http://www.hopkinsmedicine.org/anne-burke>

Viewing the full profile is available to verified
healthcare professionals only.

Join over one million U.S. Physicians, Nurse
Practitioners and PAs, already on Doximity.

Find your profile and take control of your
online presence:



Anne Elizabeth Burke, MD, MPH
Obstetrics & Gynecology Nottingham, MD

Similar Physicians &
HCPs

Obstetrics & Gynecology, Maryland
[Ross Martin, MD](#) · [Michael Lantz, MD](#) · [Yao-King Hsu, MD](#) ·
[Jean Anderson, MD](#) · [Marilyn Short, MD](#) · [William Prevas, MD](#) ·
[Katherine \(Mudd\) Dengler, MD](#) · [Amy Andrus, MD](#) · [Henry Gering, MD](#)
· [Leona Leung, MD](#)

[Doximity](#) / [States](#) / [Maryland](#) / [Nottingham](#) / Anne Burke, MD

Dr. Anne Burke, Dr. Anne Burke, MD, Dr. A Burke, Dr. Anne Elizabeth Burke



About

Clinicians

Partners

COMPANY

PRODUCT

OVERVIEW

PRESS

DOWNLOADS

ACADEMICS

BLOG

HELP

DEVELOPER API

WORK@

TERMS OF SERVICE

HIRING SOLUTIONS

CONTACT

PRIVACY

HOSPITALS

DIRECTORY



Anne Elizabeth Burke, MD, MPH
Obstetrics & Gynecology Nottingham, MD

iPhone and iPad are trademarks of Apple Inc.,
registered in the U.S. and other countries.