



[About \(../.../..../about/index.html\)](#) [Education \(../.../..../education\)](#)
[School of Medicine Home \(../.../..../index.html\)](#) [Departments \(../.../..../index.html\)](#)

[Department of Gynecology and Obstetrics \(../.../..../index.html\)](#)
[Family Planning \(../.../..../index.html\)](#)

[Divisions \(../.../..../index.html\)](#)

Family Planning

In this section

Message from the
Division Director,
Carrie Cwiak, MD,
MPH



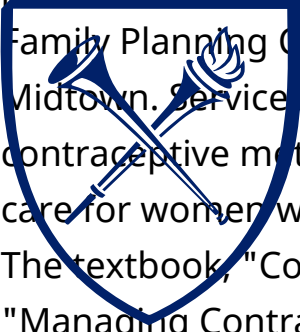
Contact Us

Emory University
School of Medicine
100 Woodruff
Circle,
Atlanta, GA 30322

[html/](#)
**Download
our
Newsletter**

Skip to main content

The Family Planning Division has provided services to the community since 1962. Faculty and fellows currently see



patients at Grady Memorial Hospital, primarily through the Family Planning Clinic, and at Emory University Hospital Midtown. Services include the full range of currently available contraceptive methods as well as expert reproductive health care for women with chronic and complex medical conditions. The textbook, "Contraceptive Technology," and the handbook, "Managing Contraception," both used in many family planning programs in this country and abroad, were produced by this program.

[About \(../../../about/index.html\)](#)

[Education \(../../../education\)](#)

Fellow training in contraception and abortion care is provided through the Family Planning Fellowship (<http://www.familyplanningfellowship.org/>). Residents are full participants in this program, which teaches basic science and clinical aspects of contraception. Resident training is provided through the Kenneth J. Ryan Residency Training Program in Abortion and Family Planning (<http://www.ryanprogram.org/>).

Education of students, residents, and providers is a focus of the program through the weekly Family Planning Clinical Conference Series ([../../education/conferences/index.html](http://www.familyplanning.org/education/conferences/index.html)), as well as the annual Contraceptive Technology conference (<https://contemporaryforums.com/>). The program has also developed or participated in many research projects, including: provision of condoms in clinical settings, quickstart initiation of contraceptive pills, postplacental insertion of IUDs, and techniques for teaching contraception. Faculty and fellows have conducted training and research in various international settings as well.

For brief descriptions of pregnancy and contraceptive options, visit managingcontraception.com (<http://managingcontraception.com/>) and select "CHOICES (<http://managingcontraception.com/index.php?go=choices>)."

[Skip to main content](#)

You may also wish to ask a contraceptive question or browse the educational products available on this site. You should note

that this information is NOT intended as a substitute for seeing a qualified health care provider. You can get more information on each of these methods from a clinician or family planning clinic.



[About \(../..../about/index.html\)](#)

[Education \(../..../education\)](#)

The Office of Population Research

(<http://ec.princeton.edu/info/contrac.html>) at Princeton
([../..../index.html](http://ec.princeton.edu/info/contrac.html))

University offers additional information about contraception and reproductive health.

Regards,

Carrie Cwiak, MD, MPH

(<https://med.emory.edu/directory/profile/?u=CCWIAK>)

Associate Professor

Patient Care

- Emory's Family Planning division provides high-quality contraceptive services with the unique ability to manage complicated clinical presentations.
- We understand that an unplanned pregnancy can pose serious health risks to both mother and baby, and we offer the full range of contraceptive treatments, from prescriptions to surgery.
- Our patient care includes up-to-date and evidence-based options and protocols to determine the most effective contraception based on a woman's lifestyle and health.

For **patient appointments**, please call 404-778-3401.

[Skip to main content](#)

Contraceptive Options



Most effective

• Implants (e.g., Nexplanon) [About \(../../../about/index.html\)](#)

• Female sterilization

[\(../../../../index.html\)](#)

• Intrauterine devices (IUDs; e.g., Mirena®)

[Education \(../../../../education\)](#)

Effective

• Injectables (e.g., Depo-Provera®)

• Hormone Pills

• Hormone patches Rings
(e.g., NuvaRing®)

Least effective

• Male or female condoms

• Diaphragms

• Fertility awareness-based methods
(e.g., rhythm method)

Highest failure rate

• Withdrawal before ejaculation

• Spermicide

Our Locations

[Skip to main content](#)



Our team of gynecologists provide services at practices located within Grady Memorial Hospital, Emory University Hospital Midtown, and at other convenient locations throughout the Atlanta metro area.

[About \(../../../about/index.html\)](#)

[Education \(../../../education\)](#)

[\(../../../index.html\)](#)
Our offices are easy to access due to their close proximity to major highways and public transportation options.

Learn more about practice locations and find directions:

Grady Memorial Hospital (<http://www.gradyhealth.org/>)

Emory University Hospital Midtown
(<http://emoryhealthcare.org/emory-university-hospital-midtown-atlanta/index.html>)

Feminist Women's Health Center
(<http://www.feministcenter.org/>)

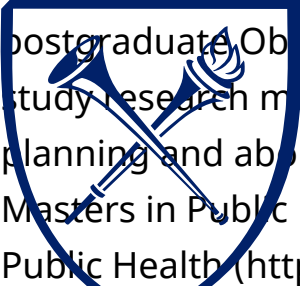
Planned Parenthood of Georgia
(<http://www.plannedparenthood.org/health-center/GA>)

To make an appointment, please call 404-778-3401.

Fellowship Program

Admissions

[Skip to main content](#)



The Fellowship in Family Planning at Emory University provides postgraduate Obstetrician-Gynecologists the opportunity to study research methods while advancing clinical skills in family planning and abortion services. This two-year program offers a Masters in Public Health degree from the Rollins School of Public Health (<https://www.sph.emory.edu>).

(<http://www.familyplanningfellowship.org/>)

Fellows are encouraged to develop their own research ideas under the mentorship of senior colleagues. Collaborations with researchers at the Centers for Disease Control, the School of Public Health, and international organizations are encouraged. Current and previous projects involve the study of contraceptive continuation, interactive contraceptive teaching tools, and post-placental IUD insertion.

Our urban, inner city Family Planning Clinic offers all available forms of contraception to an international population. Experience in abortions is obtained in a county hospital setting and at the outpatient Feminist Women's Health Center (FWHC); experience includes medical as well as first and second trimester surgical abortions. The FWHC also offers experience in specialized health services including refugee health, lesbian health, and community advocacy work.

Fellow training in contraception and abortion care is provided through the Family Planning Fellowship (<http://www.familyplanningfellowship.org/>). Residents are full participants in this program, which teaches basic science and clinical aspects of contraception. The fellowship program at Emory emphasizes teaching. Family Planning conferences with medical students, residents and clinic staff are held each week. Fellows participate in student and local community lectures and have the opportunity to develop their presentation skills at other venues.

[Skip to main content](#)

The fellow will have a junior faculty appointment in the Department of Gynecology and Obstetrics. One position is available each year.

For further information, and to apply, please visit the website (<http://www.familyplanningfellowship.org/>).
About ([../..../about/index.html](http://www.familyplanningfellowship.org/about/index.html)) Education ([../..../education](http://www.familyplanningfellowship.org/education))

([../..../index.html](http://www.familyplanningfellowship.org/index.html))
Carrie Cwiak, MD, MPH
Fellowship Director

Meet Our Team



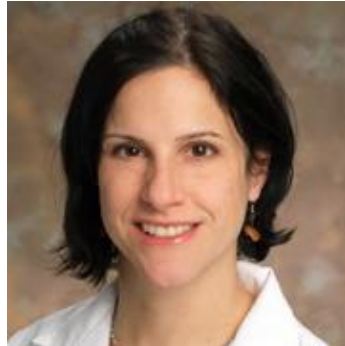
([../profile/?u=ECLARK3](http://www.familyplanningfellowship.org/profile/?u=ECLARK3))

Elizabeth Clark
([../profile/?u=ECLARK3](http://www.familyplanningfellowship.org/profile/?u=ECLARK3))



([../profile/?u=CCWIAK](http://www.familyplanningfellowship.org/profile/?u=CCWIAK))

Carrie Cwiak MD
([../profile/?u=CCWIAK](http://www.familyplanningfellowship.org/profile/?u=CCWIAK))



([../profile/?u=LBHADDA](http://www.familyplanningfellowship.org/profile/?u=LBHADDA))

Lisa Haddad MD
([../profile/?u=LBHADDA](http://www.familyplanningfellowship.org/profile/?u=LBHADDA))



([../profile/?u=THAILST](http://www.familyplanningfellowship.org/profile/?u=THAILST))

Tiffany Hailstorks
([../profile/?u=THAILST](http://www.familyplanningfellowship.org/profile/?u=THAILST))

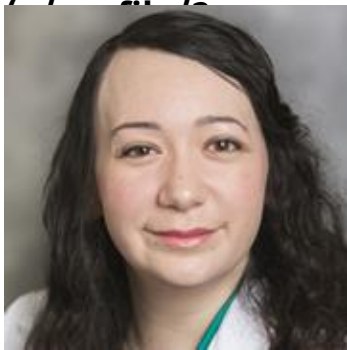
[Skip to main content](#)





(../profile/?
(../..../index.html)
u=MKOTTKE)

Melissa Kottke MD



(../profile/?u=JREEVE6)

Jennifer Reeves

(../profile/?
u=JREEVE6)



(../profile/?
u=MLAWLEY)

Megan Lawley



(../profile/?u=ATI)

Angeline Ti

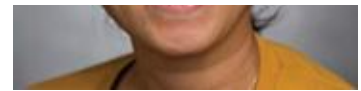
(../profile/?u=ATI)



(../profile/?
u=MEMCCOO)

Megan McCool

Myers (../profile/?
Nisha Verma
u=MEMCCOO)
(../profile/?
u=NVERMA5)



(../profile/?
u=ATNGUY2)

Education (../..../education/

Antoinette

Nguyen

(../profile/?
u=ATNGUY2)

(http://emory.edu)

Contact & Location

Emory University School of Medicine

100 Woodruff Circle

Atlanta, GA 30322 USA (tel:4047276123)

Contact Us (../..../about/contact-us.html)

Maps & Directions

(../..../about/location/directions/index.html)

Skip to main content

Careers

(http://hr.emory.edu/eu/career/index.html)



Information For

Alumni

(../..../giving/alumni/index.html)

Faculty & Staff

(../..../faculty/index.html)

(../..../index.html)

Patients (../..../clinical-

experience/advanced-patient-

care/for-patients/index.html)

Residents & Fellows

(../..../education/gme/index.html)

Students (../..../student-

info/index.html)

r?

realcode=W4MDA)

Support the School of Medicine

About (../..../about/index.html)

Education (../..../education/

School of Medicine Intranet



(https://www.facebook.com/EmoryMedicine/)



(https://twitter.com/EmoryMedicine)



(https://www.linkedin.com/school/emory-university-school-of-

medicine/)



(https://www.instagram.com/explore/locations/3325139/emory-

university-school-of-medicine/?hl=en)



(https://www.youtube.com/user/EmoryUniversity/featured)

© 2018 Emory School of Medicine

Privacy Policy (https://www.emory.edu/home/about/compliance.html)

Emergency Information

(https://www.emory.edu/home/emergency/index.html)