



Association of Reproductive
Health Professionals



Receive eAlerts | Job Board | Partner w/ARHP
Events Calendar | Join ARHP | Support ARHP

ARHP

Reproductive Health Topics

Publications & Resources

Professional Education

Newsroom

Membership

Policy & Advocacy

About Us

Professional
Education ▾

ANNUAL MEETINGS

[Send To A Friend](#)

[Share this page](#)

CME/CE Opportunities

Annual Meetings

Reproductive Health 2013

Reproductive Health 2012

Reproductive Health 2011

Annual Meeting Awards

Events Calendar

Reproductive Health 2013

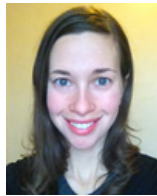


[Accommodations and Travel](#) | [Abstract FAQs](#) | [Awards](#) | [Call for Abstracts](#) | [Exhibitor Opportunities](#) | [Featured Speakers](#) | [Learning Objectives](#) | [Planning Committee](#) | [Pricing](#) | [Scholarship Opportunities](#)

Planning Committee



Michelle Forcier, MD, MPH- Chair
Pediatrician
Adolescent Medicine Specialist
The Warren Alpert Medical School of
Brown University



Loren Dobkin, FNP, RN, MPH
Clinical Research Analyst
Advancing New Standards in
Reproductive Health (ANSIRH)



Amy Levi, CNM, WHNP-BC, PhD
Professor
University of New Mexico College of
Nursing
Clinical Education Consultant
Advancing New Standards in
Reproductive Health (ANSIRH)



Sarah Pickle, MD
Women's Health Faculty Fellow
University of Medicine and Dentistry
of New Jersey



Linda Prine, MD
Associate Professor
Albert Einstein College of Medicine



Craig Roberts, PA-C, MS
Physician Assistant
Epidemiologist
Clinical Assistant Professor
University of Wisconsin-Madison



Pelin Batur, MD, FACP, NCMP, CCD
Internist
Education Director, Primary Care
Women's Health Program
Cleveland Clinic
Assistant Professor
Cleveland Clinic Lerner College of
Medicine



Beth Kruse, MS, ARNP, CNM
Nurse Practitioner
Columbia Health Center
King County Department of Public
Health



Beth Jordan Mynett, MD
Medical Director
Association of Reproductive Health
Professionals



Michael Policar, MD, MPH
Clinical Professor
Medical Director, Program Support and
Evaluation, Family PACT Program
University of California, San Francisco



Mollie Flint Reiff, MPH, RN, CHES
Doctor of Nursing Practice Candidate
University of Utah



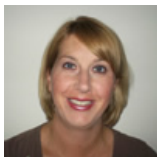
Emily Rowe, PharmD
Senior Clinical Pharmacy Specialist in
Pediatrics
Tufts Medical Center



Susan Rubin, MD, MPH
Assistant Professor
Albert Einstein College of Medicine



David Turok, MD, MPH
Associate Professor
Director, Family Planning Fellowship
University of Utah



Lorraine Wallace, PhD
Associate Professor
Director of Research, Department of
Family Medicine
Ohio State University



Carolyn Westhoff, MD
Senior Medical Advisor
Planned Parenthood Federation of
America
Director, Division of Family Planning
and Preventive Services
Professor
Columbia University Medical Center



All site content, except where otherwise noted, is licensed under a Creative Commons Attribution-Non Commercial-NoDerivs License.

[Privacy Statement](#) | [Terms & Conditions](#)

Association of Reproductive Health Professionals – East
1901 L Street, NW, Suite 300, Washington, DC 20036
(202) 466-3825 | ARHP@arhp.org

Association of Reproductive Health Professionals – West
1330 Broadway, Suite 1100, Oakland, CA 96412
(202) 466-3825 | ARHP@arhp.org

Looking for medically accurate, up-to-date, evidence-based educational programming for health care providers and materials for patients on all reproductive health topics, including abortion, contraception, HPV, menopause, menstruation, pregnancy, sexuality? Look no further than the Association of Reproductive Health Professionals (ARHP) – the leading source for trusted medical education and information on reproductive and sexual health.