

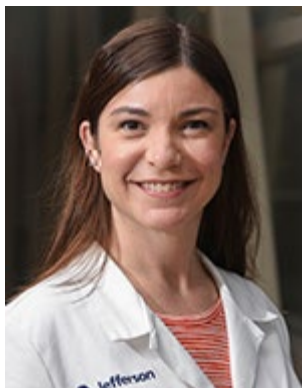
# Jefferson University Hospitals

[Patients & Guests](#) | [Our Locations](#) | [News](#)  
| [Classes & Events](#)

<a href="#">Home</a>	<a href="#">Find a Doctor</a>	<a href="#">Diseases &amp; Conditions</a>	<a href="#">Tests &amp; Treatments</a>	<a href="#">Departments &amp; Services</a>	<a href="#">Quality &amp; Safety</a>	<a href="#">About Us</a>
<a href="#">REQUEST AN APPOINTMENT</a>						
<a href="#">JEFFERSON HEALTH MYCHART</a>						
<a href="#">CALL 1-800-JEFF-NOW</a>						

[HOME](#) > [PHYSICIAN DIRECTORY](#)

[back to search results](#)



## Lisa K Perriera MD,MPH

Jefferson University Physician

ACADEMIC TITLE

**Associate Professor**

Gynecologic Specialties Division Director  
Ryan Residency Training Program Director  
Title X Clinic Medical Director

SPECIALTY

Gynecology

[BOOKMARK](#)

[SHARE PROFILE](#)

**Accepting New Patients**

PATIENT RATING



4.8/5 stars

## Book an Appointment

If you have a Jefferson Health MyChart account you can directly schedule within MyChart.

**MyChart Username**

**Password**

[Forgot MyChart Username?](#)

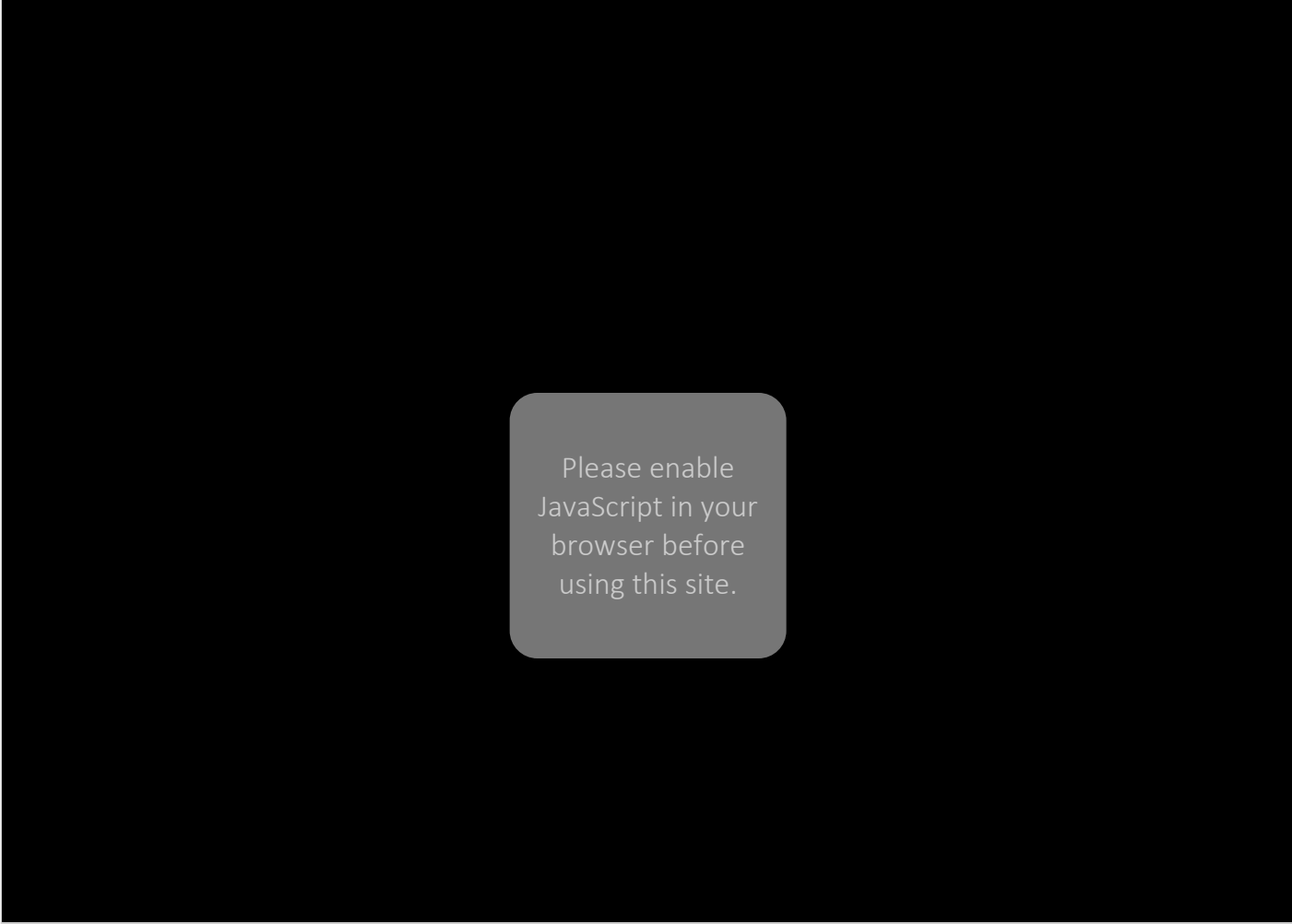
[Forgot Password?](#)

[En Español](#) | [Sign Up for an Account](#)

## Online Scheduling

---

The highly skilled gynecologists at Jefferson offer women access to state-of-the-art gynecological care and services that range from routine exams to the latest minimally invasive procedures.



Please enable  
JavaScript in your  
browser before  
using this site.

## Overview

---

### Departments & Programs

[Gynecology & Women's Services](#)

---

### Conditions

[Dysmenorrhea](#)  
[Endometriosis](#)

[Miscarriage](#)

---

## Treatments

[Dilation & Curettage](#)

[Endometrial Ablation](#)

---

## Education & Fellowships

SUNY at Stony Brook School of Medicine, Medical School

University of Pittsburgh - Graduate School Of Public Hlth, Medical School

*Internship:* New York University Medical Center

[SHOW MORE EDUCATION](#)

---

## Years in Practice

14

---

## Board Certification

Obstetrics and Gynecology

---

## Hospital Affiliation

Thomas Jefferson University Hospitals

Jefferson Methodist Hospital

---

## Insurances Accepted

Jefferson physicians accept most health insurance plans, including those listed below. However, plan acceptance may vary by practice and may be subject to change. If you have questions about whether a specific physician accepts your insurance, please contact your insurance company.

Aetna

Aetna Better Health

Aetna Medicare

[SHOW MORE INSURANCES](#)

Aetna PA Employee Benefit Trust Fund (PEBTF)

AmeriHealth

AmeriHealth Comprehensive

---

## Patient Ratings

Friendliness/courtesy of the care provider:

[SHOW RATINGS](#)



[Learn more about Patient Ratings](#)

---

## Awards

C. Lalor Burdick Award 2014

[SHOW AWARDS](#)

---

## Publications

[Anticipated Pain During Intrauterine Device Insertion](#)

[SHOW PUBLICATIONS](#)

## Locations

---

833 Chestnut Street  
Floor 1  
Philadelphia, PA 19107

**Phone: (215) 955-5000**

**Fax: (215) 923-1089**

[GET DIRECTIONS](#)



HOME OF SIDNEY KIMMEL MEDICAL COLLEGE

[CAREERS](#)

[GIVE NOW](#)

[Jefferson Main](#)

[Leadership](#)

[Jefferson Blogs](#)

[University Admissions](#)

[Patient Appointments](#)

[JEFFERSON UNIVERSITY HOSPITALS](#)

[Find a Doctor](#)

[Diseases & Conditions](#)

[Tests & Treatments](#)

[Departments & Services](#)

[Quality & Safety](#)

[About Us](#)

[EXPLORE THE REST OF JEFFERSON](#)

[THOMAS JEFFERSON UNIVERSITY](#)

[JEFFERSON HEALTH](#)

[JEFFERSON PHYSICIANS](#)

[JEFFERSON INNOVATION](#)

[JEFFERSON PHILANTHROPY](#)

[News](#)

[Classes & Events](#)

[Our Locations](#)

[Contact Us](#)

[Sitemap](#)

---

We are reimagining diversity and inclusion to promote and cultivate an inclusive environment that celebrates the differences and similarities of our patients, families, students, workforce and the communities we serve to achieve an equitable culture.

The Web site for Thomas Jefferson University Hospitals, its contents and programs, is provided for informational and educational purposes only and is not intended as medical advice nor, is it intended to create any physician-patient relationship. Please remember that this information should not substitute for a visit or a consultation with a healthcare provider. The views or opinions expressed in the resources provided do not necessarily reflect those of Thomas Jefferson University Hospitals, Thomas Jefferson University or their staffs. By using this Web site, you accept these [terms of use](#). Please read our [online privacy statement](#). Please read our [privacy practices](#).

Copyright © 2019 Thomas Jefferson University Hospitals. All Rights Reserved.