

[Residency \(/residency\)](#) / Education & Curriculum

Education & Curriculum

Education permeates the culture at Magee. Trainees of all levels in multiple disciplines participate in patient care and educational activities at this institution. The department, hospital and UPMC provide strong support to medical teachers, excellent educational facilities, and rich simulation resources for medical trainees to optimize their learning and achieve their career goals.



Educational Objectives

View the education objectives ([/residency/education-curriculum/educational-objectives](#)) of our four-year residency program.



Rotation Schedule

View our residency program rotation schedule ([/sites/default/files/landing-images/ROTATION%20SCHEDULE%202019-2020.pdf](#)).



Elective Opportunities

View the elective opportunities ([/sites/default/files/person-images/Elective%20Opportunities.pdf](#)) available in our residency program.

International Experiences



Residents in the Obstetrics and Gynecology training program at UPMC have the opportunity to pursue their interest in global health. An international elective exists during their third year. Two options currently exist for an international experience.

In partnership with Georgetown Public Hospital in Guyana, upper level residents may elect to participate alongside obstetrics and gynecology residents from Guyana. The residency in Guyana was established to improve training for Guyanese doctors in Obstetrics and Gynecology to decrease both obstetric and newborn morbidity and mortality. The month-long rotation in Guyana involves rotating through three services: obstetrics, gynecology, and clinic in addition to one week of night float.

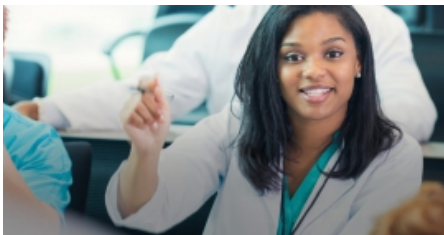
The Department of Obstetrics, Gynecology and Reproductive Science is partnering with Jaramogi Oginga Odinga Teaching and Referral Hospital (JOORTRH) in Kisumu, Kenya. This collaboration is part of a mutually beneficial partnership which allows UPMC residents, fellows and physicians the opportunity to assist Kenyan in skills transfer and improving their quality of care, while expanding their own surgical skills and adapting to a limited resource setting. JOORTRH is a level 5 hospital, 400 bed facility located within Kisumu City, the third largest city in Kenya. It is a public hospital under the management of the Department of Health of Kisumu County. Magee residents will work collaboratively in a clinical setting with Kenyan medical students, interns, medical officers, residents and Kenyan Obstetrician and Gynecologists. They will also be closely supervised and supported by UPMC Faculty during their rotation. The focus would be on inpatient, outpatient care and gynecologic surgery with a schedule tailored to meet each applicants' personal interests.

These international opportunities allow for clinical exposure to and experience in Obstetric and Gynecologic Conditions infrequent in the developed world. This elective will provide unique and valuable experiences and perspectives for any who choose to participate. A few examples of surgical cases include: cervical cancer, obstetric fistulas and large fibroids. Due to delayed access to care, it is more common to see obstetric emergencies such as: eclamptic seizures, ruptured uteri, ruptured ectopic pregnancies, cervical lacerations as well as third- and fourth-degree tears. Surgical challenges within these regions not only include limited resources, but intra-abdominal scar tissue resulting from female genital schistosomiasis, typhoid, abdominal tuberculosis and pelvic inflammatory disease. Additional exposure includes medical diseases such as HIV/AIDS related illnesses and neglected tropical diseases in reproductive age women. This collaboration would provide physicians the opportunity to assist Kenyans in improving the quality of

their care, while expanding their own surgical skills and adapting to a limited resource setting. Finally, this mission fulfills a humanitarian duty to serve those who have the greatest need.

Scholarships are available to residents who are interested in this elective rotation to help defray travel expenses. Housing in a safe environment is also provided with opportunities to explore Kenya and Eastern Africa or Guyana. Safe transportation with a vetted and assigned driver will also be available. Additional education regarding international travel safety will be required for participation.

If you have any questions regarding global health opportunities, you may contact Dr. Jennifer Makin at makinjc@upmc.edu (mailto:makinjc@upmc.edu) or Dr. Daniel Lattanzi at lattanzidr@upmc.edu (mailto:lattanzidr@upmc.edu)



Ryan Residency Program

Magee-Womens Hospital has long been a leader in family planning, and our residents have had a dedicated family planning rotation since 2005. The program added a Ryan Residency Program (<http://www.ryanprogram.org/>) in 2014 to further strengthen, and enhance, our residents' experience in family planning. Family planning training is also integrated throughout the residency including in the outpatient clinic, the operating room, and the post-partum units.

RESIDENCY

[OUR PROGRAM \(/RESIDENCY/OUR-PROGRAM\)](#)

[LEADERSHIP & STAFF \(/RESIDENCY/LEADERSHIP-STAFF\)](#)

[EDUCATION & CURRICULUM \(/RESIDENCY/EDUCATION-CURRICULUM\)](#)

[START DATE & ORIENTATION INFORMATION \(/RESIDENCY/START-DATE-ORIENTATION-INFORMATION\)](#)

[CULTURE & BENEFITS \(/RESIDENCY/CULTURE-BENEFITS\)](#)

[APPLICATION & INTERVIEW PROCESS \(/RESIDENCY/APPLICATION-INTERVIEW-PROCESS\)](#)

[RESIDENCY PROGRAM ALUMNI \(/RESIDENCY/RESIDENCY-ALUMNI\)](#)

FAQ'S >

Training Verification

How to request verification (/node/318) of Ob/Gyn Residency or Subspecialty Training.

Living in Pittsburgh >



Faculty Development

Interested in Faculty Development? ([/node/435](#))

Interested in the Faculty Mentor Program? (<https://www.obgyn.pitt.edu/faculty-mentor-program>)

Department of

Obstetrics, Gynecology, and Reproductive Sciences

(/)

UPMC Magee-Womens Hospital

300 Halket Street

Pittsburgh, PA 15213

(<https://www.google.com/maps/place/300+Halket+St,+Pittsburgh,+PA+15213/@40.4368286,-79.962882,17z/data=!3m1!1e3!4m2!3m1!1s300+Halket+St,+Pittsburgh,+PA+15213>)

412-641-1000

Resources

Institutional Review Board (IRB) (<http://www.irb.pitt.edu/>)

Office of Human Resources (<http://www.hr.pitt.edu/>)

Office of Clinical Research

(<http://www.ctsi.pitt.edu/temp/ocredirect.html>)

School of Dental Medicine (<http://www.dental.pitt.edu/>)

School of Medicine (<http://www.medschool.pitt.edu/>)

School of Pharmacy (<http://www.pharmacy.pitt.edu/>)

School of Nursing (<http://www.nursing.pitt.edu/>)

School of Public Health

(<http://www.publichealth.pitt.edu/>)

Office of Research Health Sciences
(<http://www.oorhs.pitt.edu/>)

Office of Technology Management
(<http://www.innovation.pitt.edu/>)



Revised 10/04/19 Copyright 2019 Send feedback about this site (<https://www.pitt.edu/content/website-feedback>)