



-
-
-
-
-
-

ADVERTISEMENT

[Home](#) › [Group Practices Directory](#) › [Maryland \(MD\)](#) › [Baltimore](#) › Planned Parenthood Of Maryland

Planned Parenthood Of Maryland

Nursing (Nurse Practitioner), Obstetrics & Gynecology, Advanced Practice Midwifery

330 N Howard St
Baltimore, MD 21201
(410) 576-1414

[View Practice Website](#)

ADVERTISEMENT

Office Locations

Loading map...

1

[Planned Parenthood Of Maryland](#)

330 N Howard St
Baltimore, MD 21201
(410) 576-1414 (Office)

- [Directions](#)

Our Physicians

Obstetrics & Gynecology

[Dr. Richard J. Bass, MD](#)

330 N Howard St
Baltimore, MD 21201 – [More Locations](#)



Compare

Patient Satisfaction

[Take A Survey](#)

Save Saved | Share | [View Profile](#)

Advanced Practice Midwifery

[Rebecca M. Felter-Wernsdorfer, CNM](#)

330 N Howard St
Baltimore, MD 21201



Compare

Patient Satisfaction

[Take A Survey](#)

Save Saved | Share | [View Profile](#)

Obstetrics & Gynecology

[Dr. Cristina P. Hamill, MD](#)

330 N Howard St
Baltimore, MD 21201 – [More Locations](#)



Compare

Patient Satisfaction

[Take A Survey](#)

Save Saved | Share | [View Profile](#)

Nursing (Nurse Practitioner)

[Anne S. Rosenberg, CRNP](#)

330 N Howard St
Baltimore, MD 21201



Compare

Patient Satisfaction

[Take A Survey](#)

Save Saved | Share | [View Profile](#)

Nursing (Nurse Practitioner)

[Salley K. Westcott](#)

330 N Howard St
Baltimore, MD 21201



Compare

Patient Satisfaction

[Take A Survey](#)

Save Saved | Share | [View Profile](#)

ADVERTISEMENT

Before Your Next Doctor Visit

- [Fight Seasonal Allergies With Food](#)
- [6 Tips for Eating Out With Food Allergies](#)
- [Signs of an Allergy Emergency](#)

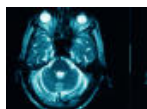
ADVERTISEMENT

Nearby Group Practices

- [Philadelphia, PA](#)
- [Baltimore, MD](#)
- [Washington, DC](#)
- [Rockville, MD](#)
- [Fairfax, VA](#)
- [Wilmington, DE](#)
- [Bethesda, MD](#)
- [Silver Spring, MD](#)
- [Allentown, PA](#)
- [Alexandria, VA](#)

Popular Topics in Health Today

Healthgrades



- [How Rheumatoid Arthritis Affects Your Brain](#)



- [Beat Knee Arthritis With Injections](#)



[How Singing Can Help COPD](#)



[7 Surprising Erectile Dysfunction Facts](#)



[How Exercise Affects Blood Sugar](#)

ADVERTISEMENT

[Providers by Specialty ›](#)

[Hospital and Group Practices ›](#)

[Procedures ›](#)

[Conditions ›](#)

[All Specialties](#) | [Cardiologists](#) | [Chiropractors](#) | [Clinical Psychologists](#) | [Counselors](#) | [Dentists](#) | [Dermatologist](#) | [Ear, Nose & Throat](#) | [Endocrinologists](#) | [Family Practitioners](#) | [Gastroenterologists](#) | [General Surgeons](#) | [Geriatricians](#) | [Gynecologists & Obstetricians](#) | [Hematologists](#) | [Internists](#) | [Nephrologists](#) | [Neurologists](#) | [Neurosurgeons](#) | [Ophthalmologists](#) | [Orthopedic Surgeons](#) | [Pain Medicine](#) | [Pediatricians](#) | [Plastic Surgeons](#) | [Psychiatrists](#) | [Psychologists](#) | [Rheumatologists](#) | [Sports Medicine](#) | [Urologists](#)

[Affiliated Hospitals](#)
[Affiliated Physician](#)
[Search Provider by Name](#)

[Dialysis Centers](#)
[Find a Dentist](#)

[Find a Doctor](#)
[Find a Hospital](#)

[Group Practices](#)
[Hospitals](#)

[Colonoscopy](#)
[Dialysis](#)
[Endoscopy](#)

[Gastric Bypass](#)
[Hormonal Therapy](#)
[Hysterectomy](#)

[Laparoscopy](#)
[LASIK](#)
[Liposuction](#)

[Vasectomy](#)
[View All Articles](#)

[Providers By Condition](#)
[Providers By Procedure](#)
[View All Conditions](#)

[View All Symptoms](#)
[Health Guides](#)



[For Patients](#)

[For Providers](#)

[For Partners](#)

[About Us](#)

[Connect With Us](#)



© Copyright 2015 Healthgrades Operating Company, Inc. Patent US Nos. 7,752,060 and 8,719,052. All Rights Reserved.

Third Party materials included herein protected under copyright law.

Use of this website and any information contained herein is governed by the [Healthgrades User Agreement](#).

To Protect Your Privacy

We end your session when you are inactive for 60 minutes. You have 1 minute left. Do you want to stay logged in?

Yes, Keep Me Logged In

You have been logged out due to inactivity.

Close