

Meet Our Team



(../..../index.html)

(../profile/?u=ECLARK3)

Elizabeth Clark

(../profile/?

u=ECLARK3)

About (../..../about/index.html)



(../profile/?u=CCWIAK)

Carrie Cwiak MD,

MPH (../profile/?

u=CCWIAK)

Education (../..../education/inc



(../profile/?u=THAILST)

Tiffany Hailstorks

(../profile/?

u=THAILST)



(../profile/?
u=MKOTTKE)

Melissa Kottke MD

(../profile/?

u=MKOTTKE)



(../profile/?
u=MLAWLEY)

Megan Lawley

(../profile/?

u=MLAWLEY)



(../profile/?
u=MEMCCOO)

Megan McCool

Myers (../profile/?

u=MEMCCOO)

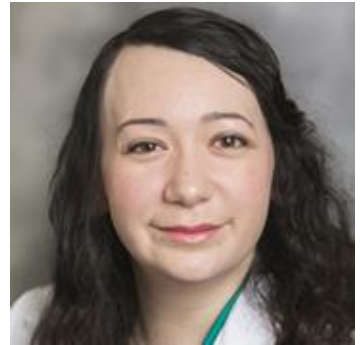


(../profile/?
u=ATNGUY2)

Antoinette Nguyen

(../profile/?

u=ATNGUY2)



(../profile/?u=JREEVE6)

Jennifer Reeves

(../profile/?

u=JREEVE6)



Skip to main content



(../profile/?u=ATI)
(../profile/?u=NVERMA5)

Nisha Verma

About (../profile/?u=NVERMA5) about/index.html)

Education (../..../education/inc

(../..../index.html)

Contact & Location

Emory University School of Medicine
100 Woodruff Circle
Atlanta, GA 30322 USA

Contact Us (../..../about/contact-us.html)

Maps & Directions
(../..../about/location/directions/index.html)

Careers
(http://hr.emory.edu/eu/career/index.html)

Information For

Alumni
(../..../giving/alumni/index.html)

Faculty & Staff
(../..../faculty/index.html)

Patients (../..../clinical-experience/advanced-patient-care/for-patients/index.html)

Residents & Fellows
(../..../education/gme/index.html)

Students (../..../student-info/index.html)

(http://emory.edu)

aspx?
Support the School of Medicine
?appealcode=W4MIDA)

School of Medicine Intranet

(https://www.facebook.com/EmoryMedicine/)

(https://twitter.com/EmoryMedicine)

(https://www.linkedin.com/school/emory-university-school-of-medicine/)

(https://www.instagram.com/emorymedschool/?hl=en)

(https://www.youtube.com/user/EmoryUniversity) **Skip to main content**