

Faculty



Muneeza Khan, MD

Department Chair
Residency Program Director
Associate Professor

UT/ST FRANCIS FAMILY PRACTICE CENTER
1301 PRIMACY PARKWAY
MEMPHIS TN 38119
(901) 866-8812

mkhan14@uthsc.edu

[See more info, if available...](#)



Sheetal Patel, MD

Assistant Professor
Advanced Women's Healthcare Fellowship
Director

UT/ST FRANCIS FAMILY PRACTICE CENTER
1301 PRIMACY PARKWAY
MEMPHIS TN 38119
(901) 866-8812

spatel40@uthsc.edu

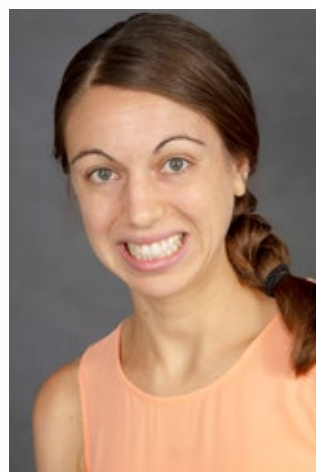
[See more info, if available...](#)



Anna Chollet, MD

Assistant Professor

UT/ST FRANCIS FAMILY PRACTICE CENTER
1301 PRIMACY PARKWAY
MEMPHIS TN 38119



Monica Juma, MD

Assistant Professor

UT/ST FRANCIS FAMILY PRACTICE CENTER
1301 PRIMACY PARKWAY
MEMPHIS TN 38119

(901) 866-8812

achollet@uthsc.edu

[See more info, if available...](#)



Gary Lipscomb, MD

Professor/OB-GYN

UT/ST FRANCIS FAMILY PRACTICE CENTER
1301 PRIMACY PARKWAY
MEMPHIS TN 38119
(901) 866-8812

glipscom@uthsc.edu

[See more info, if available...](#)



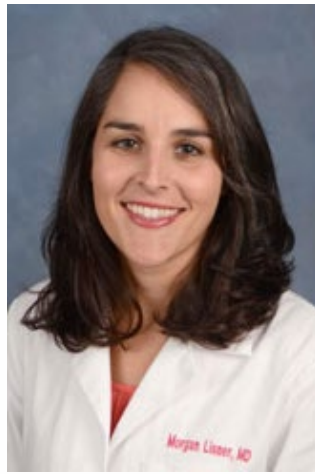
Amanda Miller, MD

Assistant Professor

(901) 866-8812

mjuma@uthsc.edu

[See more info, if available...](#)



Morgan Lisner, MD

Assistant Professor

UT/ST FRANCIS FAMILY PRACTICE CENTER
1301 PRIMACY PARKWAY
MEMPHIS TN 38119
(901) 866-8812

mlisner@uthsc.edu

[See more info, if available...](#)



Jeff Nelson, MD

Assistant Professor

UT/ST FRANCIS FAMILY PRACTICE CENTER
1301 PRIMACY PARKWAY
MEMPHIS TN 38119
(901) 866-8812

aweave13@uthsc.edu

[See more info, if available...](#)



Ryan Shumon Rahman, MD

UT/ST FRANCIS FAMILY PRACTICE CENTER
1301 PRIMACY PARKWAY
MEMPHIS TN 38119
(901) 866-8812

rrahman3@uthsc.edu



UT/ST FRANCIS FAMILY PRACTICE CENTER
1301 PRIMACY PARKWAY
MEMPHIS TN 38119
(901) 866-8812

jnelso50@uthsc.edu

[See more info, if available...](#)



Stephen Sittnick, DO

Assistant Professor

UT/ST FRANCIS FAMILY PRACTICE CENTER
1301 PRIMACY PARKWAY
MEMPHIS TN 38119
(901) 866-8812

ssittnic@uthsc.edu

[See more info, if available...](#)



Sarah Tiggelaar, MD

Assistant Professor

UT/ST FRANCIS FAMILY PRACTICE CENTER

1301 PRIMACY PARKWAY

MEMPHIS TN 38119

(901) 866-8812

stiggela@uthsc.edu

Hemanth Veluswamy, MD

Instructor

UT/ST FRANCIS FAMILY PRACTICE CENTER

1301 PRIMACY PARKWAY

MEMPHIS TN 38119

(901) 866-8812

hveluswa@uthsc.edu

[See more info, if available...](#)

Contact Us

Saint Francis Family Medicine

1301 Primacy Parkway

Memphis, TN 38119

Phone: (901) 448-0276

Phone: (800) 733-4858

Fax: (901) 448-0404

Department of Family Medicine

Program Links

- [College of Dentistry](#)
- [College of Graduate Health Sciences](#)
- [College of Health Professions](#)
- [College of Medicine](#)
- [College of Nursing](#)
- [College of Pharmacy](#)
- [Human Resources](#)
- [Office of Admissions](#)
- [Office of Financial Aid](#)
- [University Health](#)

Social

Share

Tweet	Share	Share
Share	email	print

Last Published: **Nov 18, 2019**

[Give Employment Calendar Contact](#)

[Privacy Policy Policies Online Disclosure Statement](#)

© 2020The University of Tennessee Health Science Center
 Memphis, Tennessee 38163
 Main: 901.448.5500
 TDD: 901.448.7382



**Email
Webmaster**



**Edit
Password**



Emergency Numbers

Call 911 or Campus Police at 901.448.4444
More Emergency Information