

BRIGHAM HEALTH



BRIGHAM AND WOMEN'S
Mary Horrigan Connors Center
for Women's Health and Gender Biology



HARVARD
MEDICAL SCHOOL



**The Mary Horrigan Connors Center for
Women's Health & Gender Biology**
2019 Annual Research Data Blitz

Tuesday, November 19th, 2019

2:30PM — 5:00PM

Reception to follow

Hale Building for Transformative Medicine
Marshall Wolf Conference Room, 3rd Floor
Brigham and Women's Hospital
60 Fenwood Road, Boston, MA

Welcome to the Connors Center's second *Annual Research Data Blitz!*

As a leading local and national force in advancing the health of women, the Mary Horrigan Connors Center for Women's Health and Gender Biology aims to ignite change in the health of women by catalyzing research, bolstering knowledge and transforming training experiences.

The aim of this meeting is to highlight the work from Connors Center leadership, fellows, and grantees, including recipients of the:

- ◆ IGNITE Awards
- ◆ Women's Health Interdisciplinary Stress Program of Research (WHISPR) Research Awards
- ◆ Women's Health Access Matters! (WHAM!) Research Award
- ◆ Mary Ann Tynan Fellowship
- ◆ Global Women's Health Fellowship Award
- ◆ The Family Planning Fellowship

We will also be highlighting the latest investigations of our expert leaders including our Scientific Advisor, Dr. JoAnn Manson, Director of Education, Dr. Deborah Bartz, and Director of Lifecourse Epidemiology, Dr. Janet Rich-Edwards.

Thank you for joining our prestigious 2019 Annual Research Data Blitz- highlighting exceptional researchers and innovative science to transform women's health!

Organizers

Hadine Joffe, MD, MSc

Executive Director

Julie Alperen, DrPH

Administrative Director

Natasha Minor, MPH

Project Manager

Winnie Ng, MA, MPH

Project Manager

Aleta Wiley, MPH, MSc

Senior Project Manager

Kalifa Wright, MPH

For more information about the Connors Center or to join our mailing list, please contact Julianna Coraccio, jcoraccio2@bwh.harvard.edu.



2:30-2:40PM

Welcome and Opening Remarks

Hadine Joffe, MD, MSc

Executive Director

Connors Center for Women's Health and
Gender Biology

Vice Chair of Research, Department of Psychiatry,
Brigham Health

Paula A. Johnson Associate Professor of Psychia-
try in the Field of Women's Health,
Harvard Medical School

Presentations

2:40-3:10PM

SESSION 1

Deborah Bartz, MD, MPH

*Gender and Satisfaction With Mentorship in Medi-
cal School: A National Study*

JoAnn Manson, MD, DrPH

*Heart and Lung Research: Novel Opportunities
Across the Life Cycle*

Cindy Liu, PhD

*Perinatal Mental Health in Chinese Immigrant
Women: The Role of Psychosocial Support*

3:10-3:40PM

SESSION 2

Morteza Mahmoudi, PhD

Cell Sex Matters

Sarah Boukezzi, PhD

*How Do Women Cope With Stress After Being
Exposed to Trauma? Let's Have a Look in Brain
and Genetics!*

Le Min, MD, PhD

How Stress Affects Reproduction in Women



3:40-4:10PM

SESSION 3

Janet Rich-Edwards, ScD, MPH

The Predictive Pregnancy: What Common Complications Reveal About Mom's Future Health

Maria Nardell, MD

Why Do People Test for HIV When They Have Previously Tested Positive and Does This Influence Whether They Start Treatment? A Study in South Africa

Sara Neill, MD

Medical Management of Miscarriage Among Massachusetts Obstetrician-Gynecologists

4:10-4:40PM

SESSION 4

Nicole LeBoeuf, MD, MPH

Cancer Immunotherapy Side Effects: Does Sex Matter?

Michelle O'Donoghue, MD, MPH

Unlocking the Secrets of a Women's Heart

Alexandra Sosinsky, BS

Women and Minorities in Clinical Trials

4:40-5:00PM

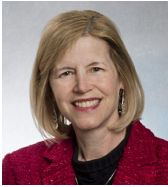
DISCUSSION AND CLOSING REMARKS

Please join us for a reception following the program!

Presenters



Deborah Bartz, MD, MPH is the Director of Education at the Connors Center. Dr. Bartz is also an obstetrician-gynecologist at BWH and an Associate Professor of Obstetrics, Gynecology and Reproductive Biology at Harvard Medical School. She is the Associate Clerkship Director for medical student rotations and is currently the Medical Director of the Massachusetts Department of Public Health's state-wide Title X Program and the Director of the BWH Ryan Training Program, where she focuses on primary care specialist, resident, and medical student training to include evidence-based, women's health care. Her current research program focuses on the development, assessment, and propagation of best educational practices of women's health curricula.



JoAnn Manson, MD, DrPH is the Scientific Advisor of the Connors Center. Dr. Manson is also the Chief of the Division of Preventive Medicine at BWH, the Michael and Lee Bell Professor of Women's Health at Harvard Medical School, and Professor in the Department of Epidemiology, Harvard T.H. Chan School of Public Health. Dr. Manson is a physician epidemiologist, endocrinologist, and Principal Investigator of several research studies. Her primary research interests include randomized clinical prevention trials of nutritional and lifestyle factors related to heart disease, diabetes, and other age-related disorders and the role of endogenous and exogenous estrogens as determinants of chronic disease.



Cindy Liu, PhD is a 2018 Mary Ann Tynan Faculty Research Fellow for her current research focusing on the impact of stress and mental health of women and their families. Dr. Liu is an Assistant Professor in the Department of Newborn Medicine at Harvard Medical School and Director of the Developmental Risk and Cultural Resilience Program within Pediatric Newborn Medicine and Psychiatry at BWH. Her areas of investigation include the measurement and mechanisms of psychosocial stress, cultural differences in socio-emotional development, and culturally based interventions that reduce mental health disparities.



Morteza Mahmoudi, PhD is a recipient of the 2018 IGNITE Award for his research titled, "Mechanistic Understanding of Structural and Molecular Differences in Female and Male Cardiac Cells and their Effects on Therapeutic benefits of Clinically Relevant Nanoparticles." Dr. Mahmoudi is also an Assistant Professor at Precision Health Program and Department of Radiology at Michigan State University. Prior to his appointment at Michigan State University, he was an Assistant Professor at BWH and Harvard Medical School. He is among 2018's highly cited researchers as reported by Clarivate Analytics. His specific research interest is in nanomedicine and regenerative medicine for the development of new nano-based platforms for prevention/treatment of life-threatening conditions such as cardiomyopathy, cancer, and neurodegenerative diseases.

Presenters



Sarah Boukezzi, PhD is a 2019 Women's Health Interdisciplinary Stress Program of Research (WHISPR) awardee. Dr. Boukezzi is also a Research Fellow with the Division of Women's Health, Department of Medicine, BWH and Department of Psychiatry at Harvard Medical School. She has a long-lasting interest in understanding psychiatric disorders such as Autism Spectrum Disorder, Schizophrenia and Posttraumatic Stress Disorder, which was the focus of her PhD. She investigates the neural mechanisms underlying these disorders and their treatments by using behavioral, psychophysiological and neuroimaging methodologies. Dr. Boukezzi is currently working on projects dealing with stress-induced eating in Major Depressive Disorder (MDD), with a particular interest on the impact of psychosocial stress on epigenetic and neurobiological mechanisms in trauma-exposed women with MDD.



Le Min, MD, PhD is a 2019 Women's Health Interdisciplinary Stress Program of Research (WHISPR) awardee. Dr. Min is also an endocrinologist in the Department of Medicine, Division of Endocrinology, Diabetes and Hypertension, at BWH and an Assistant Professor at Harvard Medical School. His research focuses on neuroendocrine regulation of reproduction and cancer immunotherapy-induced endocrine toxicity. He is working on the crosstalk between leptin and glucocorticoid in the regulation of stress-induced female reproductive disorders.



Janet Rich-Edwards, ScD, MPH is the Director of Lifecourse Epidemiology at the Connors Center. Dr. Rich-Edwards is also an Associate Professor of Medicine at Harvard Medical School and an Associate Professor of Epidemiology at Harvard T.H. Chan School of Public Health. She is leading the development of a family cohort/population database of sociodemographic information, medical history and biologic samples based on the 9,000 births at BWH each year, which will serve as an important resource for scientists across BWH and HMS. Her research focuses on the determinants of women's reproductive health across the lifecourse, and prenatal and childhood factors that affect the risk of developing chronic disease in adulthood.

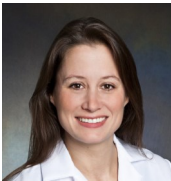


Maria Nardell, MD is a second-year fellow in the Global Women's Health Fellowship in the Connors Center. Dr. Nardell is also a hospitalist at Beth Israel Deaconess Medical Center and an Instructor at Harvard Medical School. Dr. Nardell's passion for global health stems from a belief in social justice at the heart of medicine, grounded in experiences in South Africa, Rwanda, India, Namibia, Kenya and the greater Cambridge/Somerville area. Her current research, with mentor Ingrid Katz, MD, MHS, studies antiretroviral treatment initiation among young adults newly diagnosed with HIV in South Africa.

Presenters



Sara Neill, MD is a first-year Family Planning Clinical Fellow in the Connors Center. Dr. Neill is also a Clinical Fellow in Obstetrics, Gynecology and Reproductive Biology at BWH. Her research focuses on disparities in medical system's approaches to sexual and reproductive healthcare and factors that influence obstetrician-gynecologists' decision to provide abortion care in their practice.



Nicole LeBoeuf, MD, MPH is a recipient of the 2018 IGNITE Award for her research, "Sex Differences in Immune Checkpoint Inhibitor Induced Adverse Events." Dr. LeBoeuf is also the Clinical Director of the Skin Toxicities from Anti-Cancer Therapies Program at Dana-Farber's Cutaneous Oncology department and the BWH Cancer Center, and an Assistant Professor of Dermatology in Department of Dermatology at the Harvard Medical School.



Michelle O'Donoghue, MD, MPH is the winner of the 2019 Access Circles/Women's Health Matters! (WHAM!) Research Award for her research, "Identification of Novel Pathways that Contribute to Heart Disease in Women." Dr. O'Donoghue is also a cardiovascular medicine specialist at BWH, a Connors Center Faculty Affiliate, and an Associate Professor of Medicine at Harvard Medical School. As the author of over 40 peer-reviewed publications, Dr. O'Donoghue's research focuses on optimizing the management of acute coronary syndromes (heart attacks), the study of women and heart disease, the use of existing biomarkers for risk stratification, potential new therapeutic targets, as well as the discovery and evaluation of novel biomarkers using proteomic technology.



Alexandra Sosinsky, BS is a Research Trainee at the Connors center. Ms. Sosinsky is also a Master of Science student in Epidemiology at the Harvard T.H. Chan School of Public Health. Her research interests broadly span reproductive health and pharmacoepidemiology. Currently she is studying the safety of marijuana use during pregnancy and the representation of women in drug approval studies.

BRIGHAM HEALTH



BRIGHAM AND WOMEN'S
Mary Horrigan Connors Center
for Women's Health and Gender Biology



HARVARD
MEDICAL SCHOOL

Thorn Research Building

Suite 1117

75 Francis Street, Boston MA 02115

brighamandwomens.org/connorscenter