

This is Google's cache of https://www2.phs.org/en/locations/Planned-Parenthood-Of-The-Rocky-Mountains---1681582. It is a snapshot of the page as it appeared on Sep 3, 2023 07:20:32 GMT. The current page could have changed in the meantime. Learn more.

Full version [Text-only version](#) [View source](#)

Tip: To quickly find your search term on this page, press **Ctrl+F** or **⌘-F** (Mac) and use the find bar.

[< Find a Facility](#)

Planned Parenthood Of The Rocky Mountains

9809 Candelaria Rd NE
Bldg 2 Ste C D
Planned Parenthood Of The Rocky Mountains
Albuquerque, NM 87112

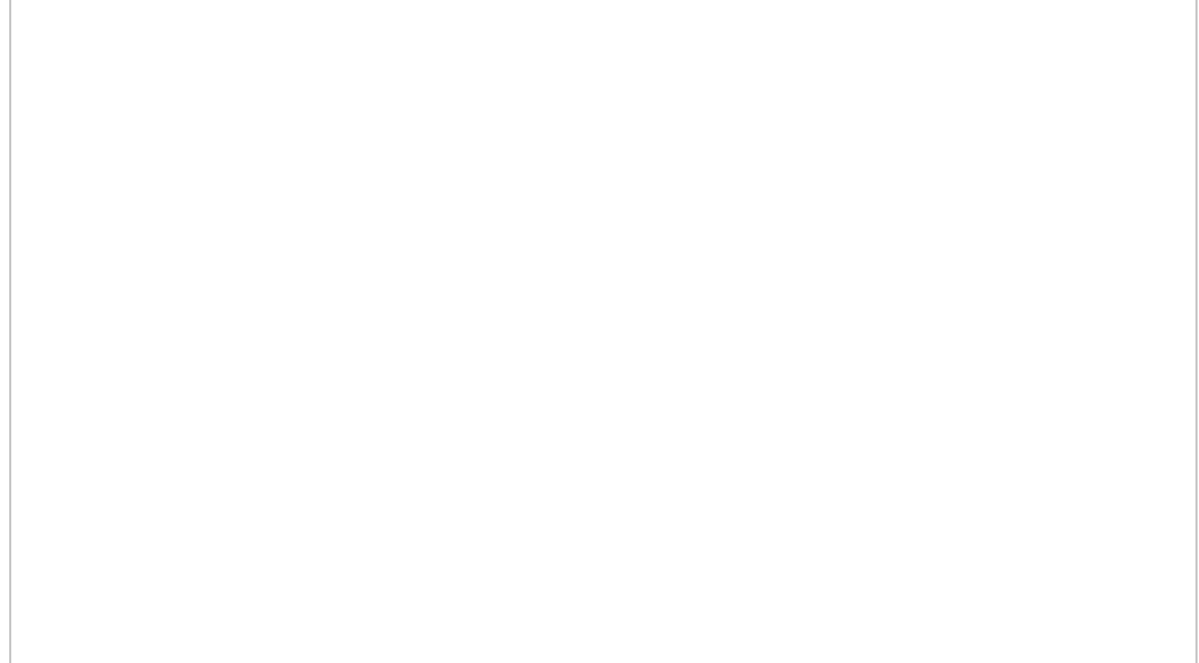
Office Hours

Mon 9:00 AM - 5:00 PM
Tue 9:00 AM - 5:00 PM
Wed 9:30 AM - 5:00 PM
Thu 9:00 AM - 5:00 PM
Fri 9:00 AM - 5:00 PM

Contact Us

[\(505\) 294-1577](tel:(505)294-1577)

 Location map



Accepted Insurance ^

Don't see your insurance?

We accept most insurance. If you don't see your plan listed here, call your insurance provider directly to confirm coverage.

- Albuquerque Public Schools
- ASO HMO, ASO PPO, ASO HDHP
- Bernalillo County
- City of ABQ HMO/POS
- Daniel B Stephens & Associates
- Dekker Perich Sabatini
- Del Norte Credit Union
- Group PPO
- Individual and Family or Group HMO/POS
- Individual Select HMO
- Intel Connected Care
- Intel Connected Care HDHP
- Presbyterian Centennial Care
- Presbyterian Employees
- State of New Mexico Tier 2 Network
- UNM Employees
- UNM Foundation Custom Plan

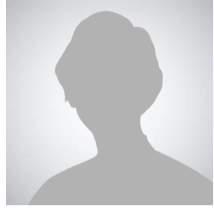
Providers at this Location



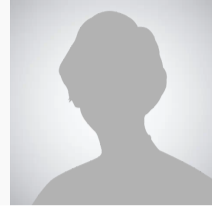
Hana Reissner MD
Obstetrics and Gynecology



Kelly Peters DO
Obstetrics and Gynecology



Kendall Coombs CNP
Family Practice



Ariel Samach CNP
Obstetrics and Gynecology

[View All Providers](#)

Related Specialties

Family Practice

Obstetrics and

Gynecology

[About this directory](#)

[Directory Search Tips](#)

[Report Inaccuracies](#)

Provider Directory Last Updated: 9/1/2023